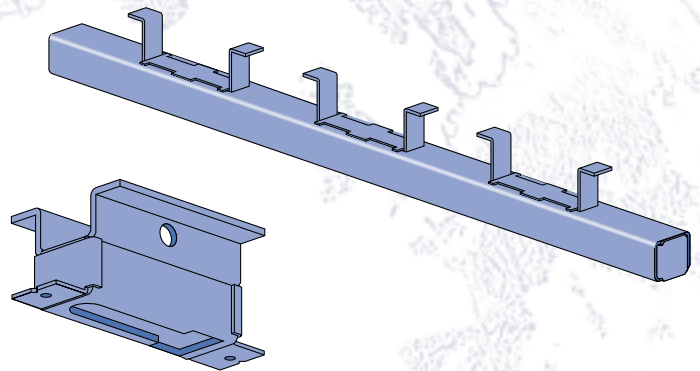
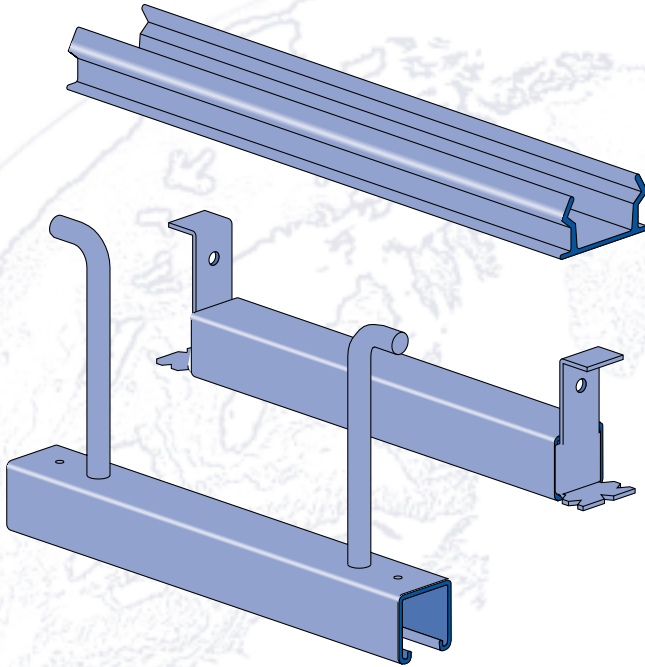




UNISTRUT®

CONCRETE INSERTS

Heavy-Duty Inserts	185
Standard-Duty Inserts	186
Light-Duty Inserts	188
Spot Inserts	189
Components	191
Technical Data	192



MATERIAL

Cold-formed inserts are manufactured from standard 12 gauge (2.7 mm) Unistrut channel sections conforming to ASTM A1011 SS GR 33 or ASTM A653 GR 33, unless otherwise noted.

Hot-rolled inserts, as noted, are manufactured from carbon steel meeting physical requirements of ASTM A283 GR D.

To inhibit concrete seepage, all inserts (except spot inserts) are provided with closure strips and end caps or foam filler, unless otherwise requested.

Most concrete inserts are available in stainless steel on special order. Consult factory for ordering information.

APPLICATION

A wide range of heavy-duty to light-duty “continuous” and “spot” concrete inserts are available for use in pre-cast, pre-stressed or poured-in-place concrete floors, walls or ceilings.

FINISHES

Cold-formed, standard-duty, light-duty and spot concrete inserts are available in Perma-Green II (GR), hot dipped galvanized (HG), conforming to ASTM A123 or A153; pre-galvanized (PG), conforming to ASTM A653 GR 33 and plain (PL).

DESIGN LOAD

Design loads, where shown, are based on 3,000 PSI concrete, unless noted.

STANDARD LENGTHS

Insert lengths range from 3 inches (76 mm) to 20 feet (6.10m) with a tolerance of $\pm\frac{1}{4}$ -inch (6.4mm).

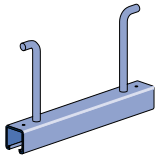
DIMENSIONS

Imperial dimensions are illustrated in inches. Metric dimensions are shown in parentheses or as noted. Unless noted, all metric dimensions are in millimeters and rounded to one decimal place.

Custom-designed inserts are available on special order. Consult factory for ordering information.

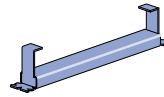


Heavy Duty

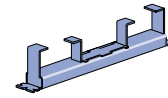


P3754-Pg 185

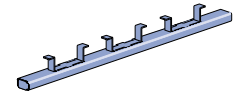
Light Duty



P3349-Pg 188

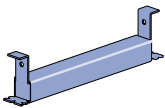


P3352-Pg 188

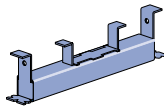


P3354-Pg 188

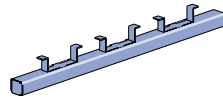
Standard Duty



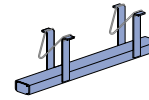
P3249-Pg 186



P3253-Pg 186



P3253-Pg 186

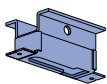


P3165-Pg 187



P2865-Pg 187

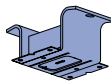
Spot Inserts and Components



M24-Pg 189



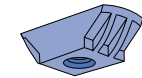
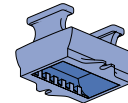
M2506-Pg 189



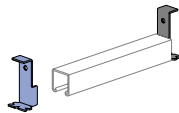
M26-Pg 190



M2808-Pg 190



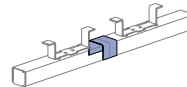
M2708-Pg 190



P1703-Pg 191

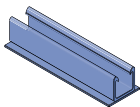


P2407-Pg 191

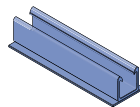


P3663-Pg 191

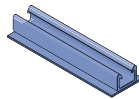
Fiberglass Concrete Inserts



Heavy Duty-Pg 240

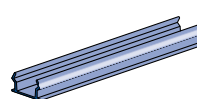


Standard Duty-Pg 244

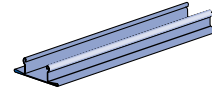


Light Duty-Pg 242

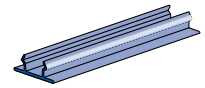
Closure Strips



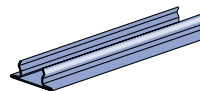
P3712-Pg 59



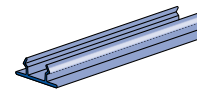
P1184-Pg 59



P1184 PVC-Pg 59



P3184-Pg 59



P3184P-Pg 59

Channel Nuts



Heavy Duty-Pg 78



Heavy Duty-Pg 78



Standard Duty-Pg 78



Standard Duty-Pg 78



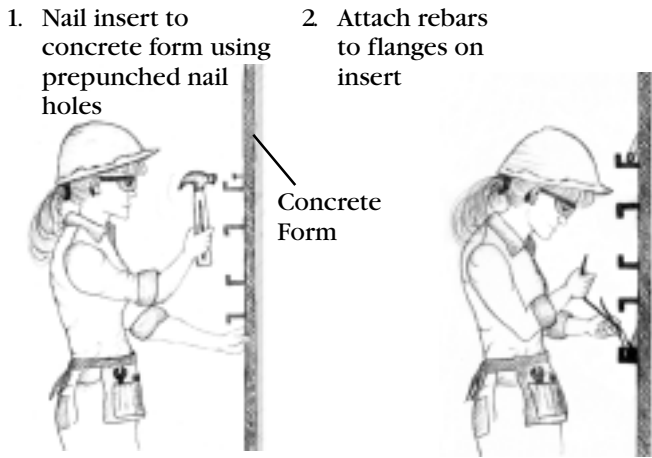
Light Duty-Pg 78



Light Duty-Pg 78

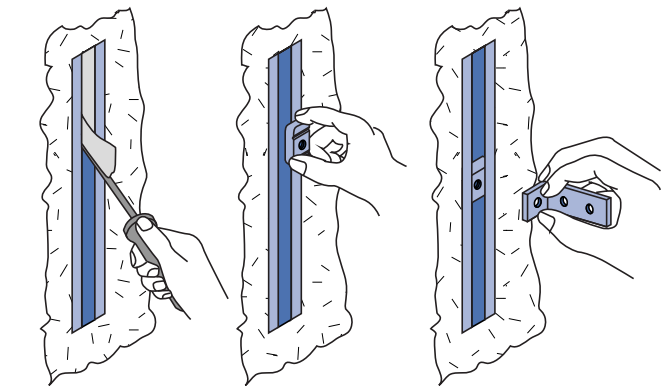
1 5/8" Channel
 Telestrut System
 Nuts & Hardware
 General Fittings
 Pipe/Conduit Supports
 Electrical Fittings
 Concrete Inserts
 1 1/4" Framing System
 1 3/16" Framing System
 Fiberglass System
 Special Metals
 PrimeAngle System
 Product Index

Installing Concrete Inserts



The Unistrut concrete insert is firmly fixed to the concrete side of the form before pouring. When the forms are removed, the insert is ready for use. Brackets and other components can be attached at any point of the continuous entry channel.

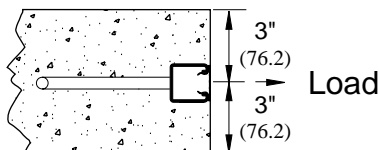
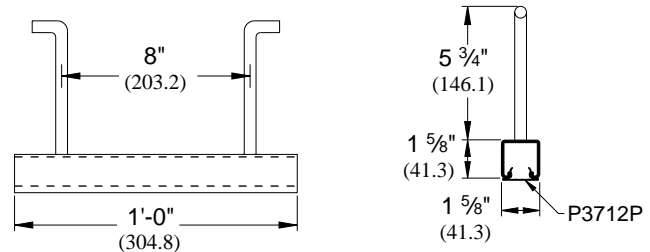
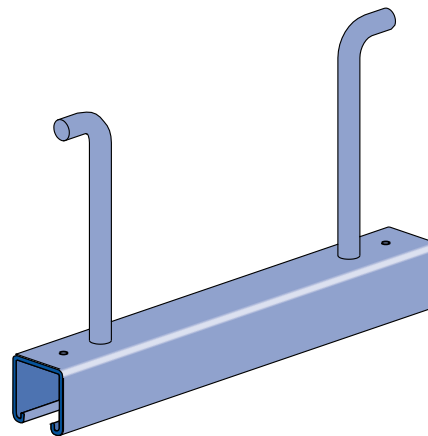
Using Installed Concrete Insert



P3754 Series

1 5/8" x 1 5/8" Channel

- Closure strip P3712 P and a styrene bead end cap that fits inside the channel to inhibit concrete seepage are included.
- The recommended design load when used for curtain wall anchorage is 5,000 pounds and is based on use in average, good concrete. The design load includes 1/3 increase in load as permitted by AISI Specifications and Uniform Building Code when stresses are produced by wind or earthquake and other loads.
- The recommended design load is based on using two P1010 nuts at no less than 3" O.C. and no closer than 2" to either end of the insert. The distance between the insert centerline and the concrete edge must be a minimum of 3".
- All nuts and fittings for P3200 series concrete inserts will fit.
- Material: Cold formed from 12 Ga. (2.7mm) steel conforming to ASTM A1011 SS GR 33 or ASTM A653 GR 33 A. Stainless steel available on special order.
- Finish: Choice of Perma-Green II (GR), hot-dipped galvanized (HG) conforming to ASTM A123 or A153, pre-galvanized (PG) conforming to ASTM A653-G90, or plain (PL).



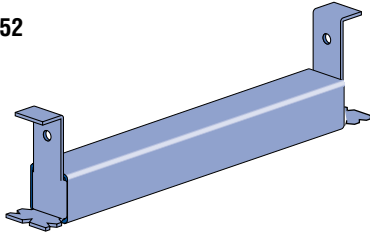
Part Number	Insert Length ±1/4" (6.4mm) In (mm)	Wt/100 pcs Lbs (kg)	Max. Anchor Spacing In (mm)	Max. Allowable Point Load Lbs (kg)	Spacing of Point Loads In (mm)	Max. Allowable Uniform Load Lbs (kg)
P3754	12 304.8	210 95.3	8 203.2	2,500 1,134.0	3 76.2	5,000 2,268.0



P3200 Series

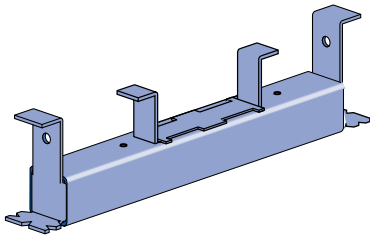
1 5/8" x 1 3/8" Channel

P3249 thru P3252



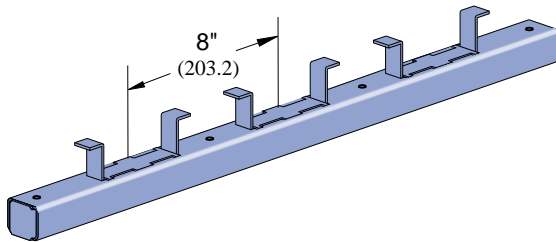
"NC" Suffix – No Closure Strip, With End Caps
 "WC" Suffix – With Closure Strip & End Caps

P3253

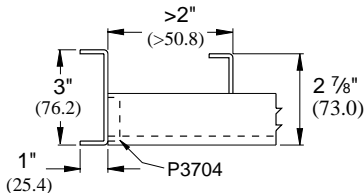
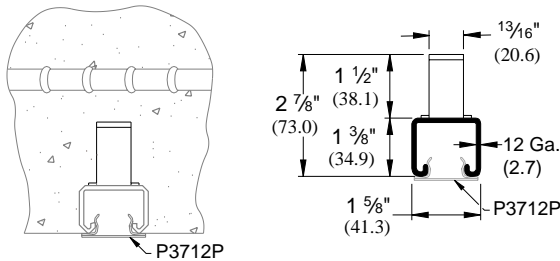


"NC" Suffix – No Closure Strip, With End Caps & Back Plates
 "WC" Suffix – With Closure Strip, End Caps & Back Plates

P3253 thru P3270



"NC" Suffix – No Closure Strip, W/End Caps & Back Plates
 "WC" Suffix – W/Closure Strip, End Caps & Back Plates
 "X" – No Closure Strip, No End Caps, W/Back Plates



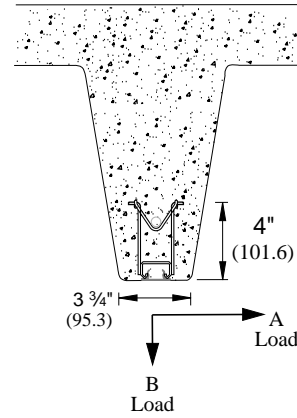
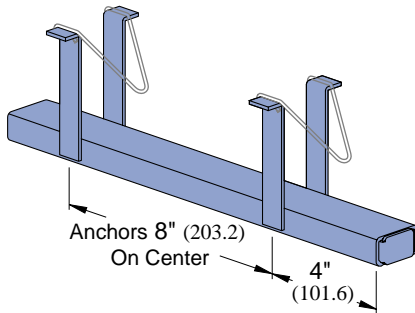
- when used for sprinkler systems.
- Includes closure and end caps unless otherwise requested.
- P3280 end cap used when distance to first anchor is up to 2" (50.8 mm).
- P3704 end cap is used when end distance to first anchor is over 2" (50.8 mm).
- Nail or anchor inserts to forms every 16" (406 mm) to 24" (610 mm).
- Anchors are 8" (203.2 mm) on center.
- Material: Cold formed from 12 Ga. (2.7 mm) steel conforming to ASTM A1011 SS GR 33 or ASTM A653 GR 33. A. Stainless steel available on special order.
- Finish: Choice of Perma-Green II (GR), hot-dipped galvanized (HG) conforming to ASTM A123 or A153, pre-galvanized (PG) conforming to ASTM A653-G90, or plain (PL).

Part Number	Insert Length In/Ft (mm)	Wt/100 pcs Lbs (kg)	Max. Allowable Point Load Lbs (kg)	Min. Spacing of Pt. Loads In (mm)	Max. Allowable Uniform Load Lbs (kg)
P3249	3" 76.2	85 38.6	500 226.8	—	500 226.8
P3250	4" 101.6	100 45.4	800 362.9	—	800 362.9
P3251	6" 152.4	130 59.0	1,000 453.6	—	1,000 453.6
P3252	8" 203.2	159 72.1	1,200 544.3	—	1,200 544.3
P3253	12" 304.8	227 103.0	2,000 907.2	—	2,000 907.2
P3254	16" 406.4	270 122.5	2,000 907.2	12 304.8	4,000 1,814.4
P3255	20" 508.0	357 161.9	2,000 907.2	12 304.8	4,000 1,814.4
P3256	24" 609.6	399 181.0	2,000 907.2	12 304.8	4,000 1,814.4
P3257	32" 812.8	527 239.0	2,000 907.2	12 304.8	2,000 Lbs./Ft. 2,976.3 (kg/m)
P3257A	36" 914.4	616 279.4	2,000 907.2	12 304.8	2,000 Lbs./Ft. 2,976.3 (kg/m)
P3258	40" 1,016.0	661 299.8	2,000 907.2	12 304.8	2,000 Lbs./Ft. 2,976.3 (kg/m)
P3259	4' 1,219.2	786 356.5	2,000 907.2	12 304.8	2,000 Lbs./Ft. 2,976.3 (kg/m)
P3260	5' 1,524.0	1,003 455.0	2,000 907.2	12 304.8	2,000 Lbs./Ft. 2,976.3 (kg/m)
P3261	6' 1,828.8	1,173 532.1	2,000 907.2	12 304.8	2,000 Lbs./Ft. 2,976.3 (kg/m)
P3262	7' 2,133.6	1,390 630.5	2,000 907.2	12 304.8	2,000 Lbs./Ft. 2,976.3 (kg/m)
P3263	8' 2,438.4	1,560 707.6	2,000 907.2	12 304.8	2,000 Lbs./Ft. 2,976.3 (kg/m)
P3264	9' 2,743.2	1,741 789.7	2,000 907.2	12 304.8	2,000 Lbs./Ft. 2,976.3 (kg/m)
P3265	10' 3,048.0	1,947 883.1	2,000 907.2	12 304.8	2,000 Lbs./Ft. 2,976.3 (kg/m)
P3266	12' 3,657.6	2,334 1,058.7	2,000 907.2	12 304.8	2,000 Lbs./Ft. 2,976.3 (kg/m)
P3267	14' 4,267.2	2,717 1,232.4	2,000 907.2	12 304.8	2,000 Lbs./Ft. 2,976.3 (kg/m)
P3268	16' 4,876.8	3,116 1,413.4	2,000 907.2	12 304.8	2,000 Lbs./Ft. 2,976.3 (kg/m)
P3269	18' 5,486.4	3,530 1,601.2	2,000 907.2	12 304.8	2,000 Lbs./Ft. 2,976.3 (kg/m)
P3270	20' 6,096.0	3,882 1,760.8	2,000 907.2	12 304.8	2,000 Lbs./Ft. 2,976.3 (kg/m)

Safety factor 3.

P3165 Series

1 5/8" x 7/8" Channel



"X" Suffix – No Closure Strip, No End Caps
 "WC" Suffix – With Closure Strip & End Caps

Part Number	Length Ft (M)	Wt/100 pcs Lbs (kg)
P3165	10 3.05	1,650 748.4
P3170	20 6.10	3,280 1,487.8

Safety factor 3.

Maximum allowable load/ft.

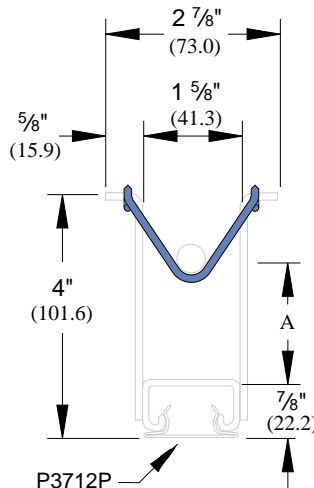
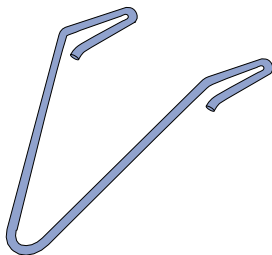
Concrete	A Lbs (kg)	B Lbs (kg)
Light Weight	425 192.8	800 362.9
Normal Weight	500 226.8	1,000 453.6

Safety factor 3.

- Designed for use in prestressed concrete.
- Anchors 8" (203.2 mm) on center; first anchor 4" (101.6 mm) from end.
- Includes closure and end caps unless otherwise requested.
- Material: Cold formed from 12 Ga. (2.7 mm) steel conforming to ASTM A1011 SS GR 33 or ASTM A653 GR 33. A. Stainless steel available on special order.
- Finish: Choice of Perma-Green II (GR), hot-dipped galvanized (HG) conforming to ASTM A123 or A153, pre-galvanized (PG) conforming to ASTM A653-G90, or plain (PL).

P2865-10, -15, -20

Hold-Down Springs



Part Number	A In (mm)	Wt/100 pcs Lbs (kg)
P2865-10	1 25.4	2 0.9
P2865-15	1 1/2 38.1	2 0.9
P2865-20	2 50.8	2 0.9

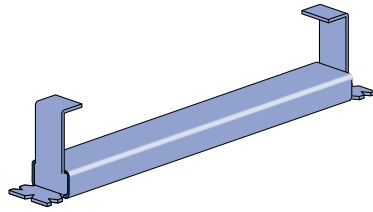
Finish: Plain



P3300 Series

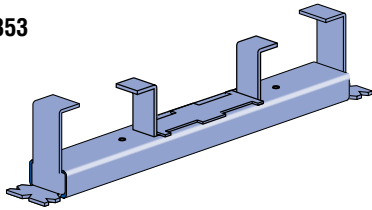
1 5/8" x 7/8" Channel

P3349 thru P3351



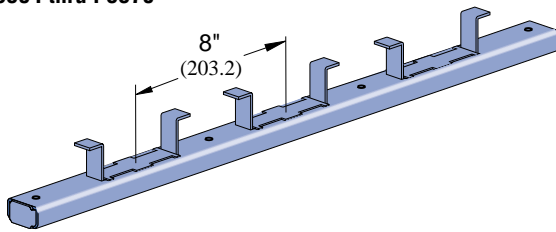
"NC" Suffix – No Closure Strip, With End Caps
 "WC" Suffix – With Closure Strip & End Caps

P3352 thru P3353

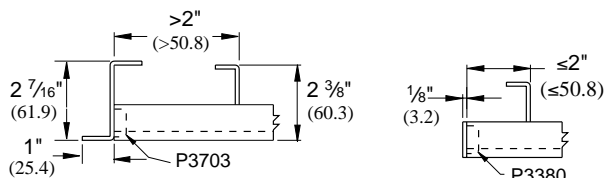
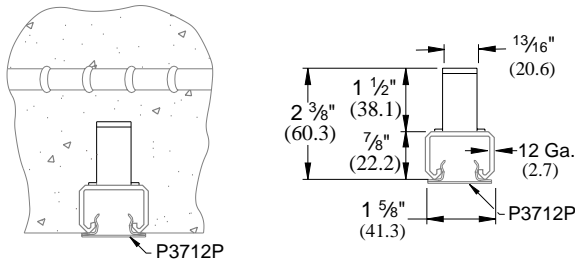



"NC" Suffix – No Closure Strip, With End Caps & Back Plates
 "WC" Suffix – With Closure Strip, End Caps & Back Plates

P3354 thru P3370



"NC" Suffix – No Closure Strip, W/End Caps & Back Plates
 "WC" Suffix – W/Closure Strip, End Caps & Back Plates
 "X" – No Closure Strip, No End Caps, W/Back Plates



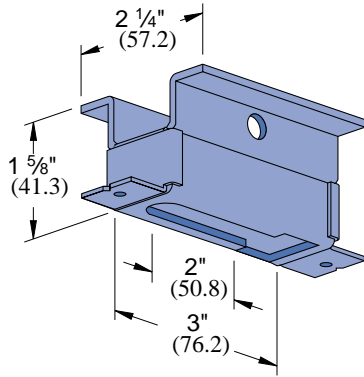
-  when used for sprinkler systems.
- Includes closure and end caps unless otherwise requested.
- P3380 end cap used when distance to first anchor is up to 2" (50.8 mm).
- P3703 end cap is used when end distance to first anchor is over 2" (50.8 mm).
- Nail or anchor inserts to forms every 16" (406 mm) to 24" (610 mm).
- Anchors are 8" (203.2mm) on center.
- Material: Cold formed from 12 Ga. (2.7 mm) steel conforming to ASTM A1011 SS GR. 33 or A653 GR 33. A. Stainless steel available on special order.
- Finish: Choice of Perma-Green II (GR), hot-dipped galvanized (HG) conforming to ASTM A123 or A153, pre-galvanized (PG) conforming to ASTM A653-G90, or plain (PL).

Part Number	Insert Length In/Ft. (mm)	Wt/100 pcs Lbs (kg)	Max. Allowable Point Load Lbs (kg)	Min. Spacing of Pt. Loads In (mm)	Max. Allowable Uniform Load Lbs (kg)
P3349	3" 76.2	68 30.8	400 181.4	—	400 181.4
P3350	4" 101.6	81 36.7	500 226.8	—	500 226.8
P3351	6" 152.4	102 46.3	750 340.2	—	750 340.2
P3352	8" 203.2	122 55.3	1,000 453.6	—	1,000 453.6
P3353	12" 304.8	174 78.9	1,500 680.4	—	1,500 680.4
P3354	16" 406.4	185.0 83.9	1,500 680.4	12 304.8	3,000 1,360.8
P3355	20" 508.0	231 104.8	1,500 680.4	12 304.8	3,000 1,360.8
P3356	24" 609.6	277 125.6	1,500 680.4	12 304.8	3,000 1,360.8
P3357	32" 812.8	370 167.8	1,500 680.4	12 304.8	1,500 Lbs./Ft. 2,232.2 (kg/m)
P3357A	36" 914.4	416 188.7	1,500 680.4	12 304.8	1,500 Lbs./Ft. 2,232.2 (kg/m)
P3358	40" 1,016.0	463 210.0	1,500 680.4	12 304.8	1,500 Lbs./Ft. 2,232.2 (kg/m)
P3359	4' 1,219.2	555 251.7	1,500 680.4	12 304.8	1,500 Lbs./Ft. 2,232.2 (kg/m)
P3360	5' 1,524.0	694 314.8	1,500 680.4	12 304.8	1,500 Lbs./Ft. 2,232.2 (kg/m)
P3361	6' 1,828.8	832 377.4	1,500 680.4	12 304.8	1,500 Lbs./Ft. 2,232.2 (kg/m)
P3362	7' 2,133.6	971 440.4	1,500 680.4	12 304.8	1,500 Lbs./Ft. 2,232.2 (kg/m)
P3363	8' 2,438.4	1,110 503.5	1,500 680.4	12 304.8	1,500 Lbs./Ft. 2,232.2 (kg/m)
P3364	9' 2,743.2	1,249 566.5	1,500 680.4	12 304.8	1,500 Lbs./Ft. 2,232.2 (kg/m)
P3365	10' 3,048.0	1,387 629.1	1,500 680.4	12 304.8	1,500 Lbs./Ft. 2,232.2 (kg/m)
P3366	12' 3,657.6	1,665.0 755.2	1,500 680.4	12 304.8	1,500 Lbs./Ft. 2,232.2 (kg/m)
P3367	14' 4,267.2	1,942 880.9	1,500 680.4	12 304.8	1,500 Lbs./Ft. 2,232.2 (kg/m)
P3368	16' 4,876.8	2,220 1,007.0	1,500 680.4	12 304.8	1,500 Lbs./Ft. 2,232.2 (kg/m)
P3369	18' 5,486.4	2,497 1,132.6	1,500 680.4	12 304.8	1,500 Lbs./Ft. 2,232.2 (kg/m)
P3370	20' 6,096.0	2,775 1,258.7	1,500 680.4	12 304.8	1,500 Lbs./Ft. 2,232.2 (kg/m)

Safety factor 3.

1 5/8" Channel
 Telestrut System
 Hardware
 General Fittings
 Pipe/Conduit Supports
 Electrical Fittings
 Concrete Inserts
 1 1/4" Framing System
 1 3/16" Framing System
 Fiberglass System
 Special Metals
 PrimeAngle System
 Product Index

P3245

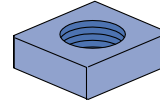


Part Number	Wt/100 pcs Lbs (kg)	Max. Allowable Pt. Load Lbs (kg)
P3245	54 24.5	1,000 453.6

Finish: Pre-galvanized

Safety factor of 3

- For 1/4", 3/8", or 1/2" size attachment or hanger rod.
- Insert nuts to be ordered separately.



Square Nut for P3245 Insert

Part Number	Size/Thread In	Wt/100 pcs Lbs (kg)
P3245-N4	1/4" — 20	6 2.7
P3245-N6	3/8" — 16	5 2.3
HSQN050	1/2" — 13	6 2.7

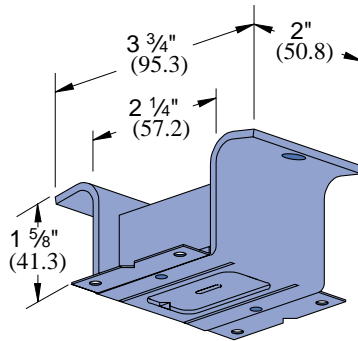
Finish: Electro-galvanized

M24

Spot Insert



(When used for sprinkler systems only.)

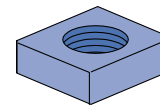


Part Number	Wt/100 pcs Lbs (kg)	Max. Allowable Pt. Load Lbs (kg)
M24	52 23.6	800 362.9

Finish: Electro-galvanized

Safety factor of 5

- Ribs along sides of slot give extra strength to case.
- Insert nuts M2506 thru M2524 to be ordered separately.



Square Nut for M24

Part Number	Size/Thread In	Wt/100 pcs Lbs (kg)
M2506	1/4" — 20	13 5.9
M2508	3/8" — 16	14 6.4
M2510	1/2" — 13	14 6.4
M2512	5/8" — 11	12 5.4
M2523	3/4" — 10	11 5.0
M2524	7/8" — 9	10 4.5

Finish: Electro-galvanized

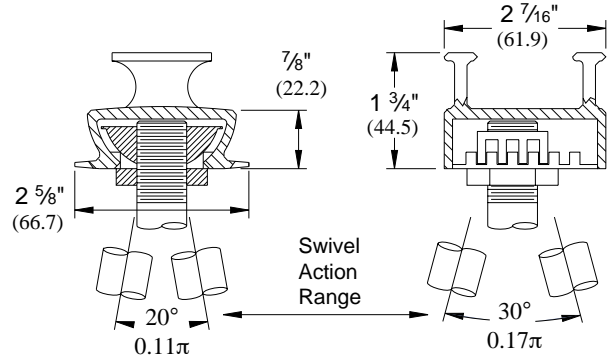
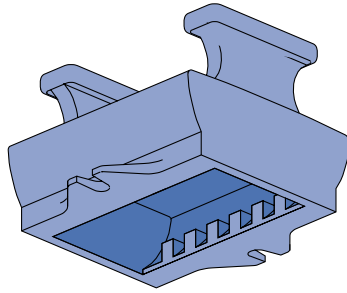


M26

Spot Insert



(When used for
sprinkler systems only.)

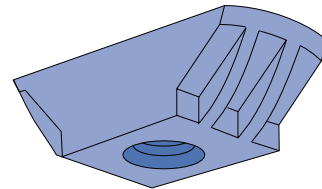
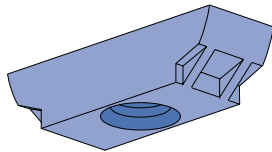


Part Number	Wt/100 pcs Lbs (kg)	Max. Allowable Pt. Load Lbs (kg)
M26	63 28.6	1,500 680.4

Finish: Malleable Iron
Material: Cadmium
Safety factor of 5

Rigid Nut for M26 Insert

Swivel Nut for M26 Insert



Part Number	Size/Thread In	Max. Allowable Load* Lbs (kg)	Wt/100 pcs Lbs (kg)
M2808	3/8" — 16	610 276.7	12 5.4
M2810	1/2" — 13	950 430.9	11 5.0
M2812	5/8" — 11	1,500 680.4	14 6.4
M2823	3/4" — 10	1,500 680.4	13 5.9
M2824	7/8" — 9	1,500 680.4	11 5.0

Part Number	Size/Thread In	Max. Allowable Load Swivel** Lbs (kg)	Wt/100 pcs Lbs (kg)
M2708	3/8" — 16	75 34.0	15 6.8
M2710	1/2" — 13	180 81.6	15 6.8
M2712	5/8" — 11	360 163.3	20 9.1
M2723	3/4" — 10	640 290.3	18 8.2
M2724	7/8" — 9	1,000 453.6	15 6.8

Finish: Cadmium

Finish: Cadmium

*The Fixed Position safe load ratings are for inserts and nut only and are based on the minimum of the following two conditions:

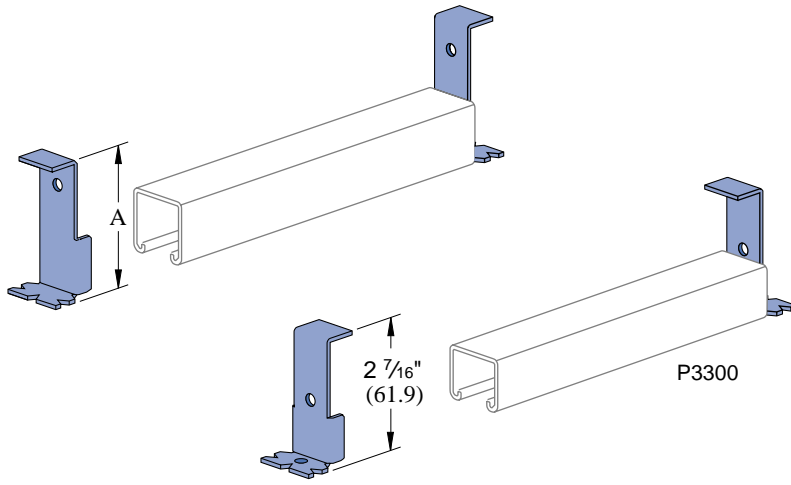
** The Swivel Action safe load ratings assures the swivel movement of the nut before the hanger is subjected to a severe bending stress, in conformance with the American Standard Code for Piping, 1967.

- (1) Load carrying capacities of threaded hanger rod as listed in the American Standard Code for 1.
- (2) Laboratory tests of ultimate strength in any fixed rigid position with a safety factor of 5.

1 5/8" Channel
Telesrnut System
Nuts & Hardware
General Fittings
Pipe/Conduit Supports
Electrical Fittings
Concrete Inserts
1 1/4" Framing System
1 3/16" Framing System
Fiberglass System
Special Metals
PrimeAngle System
Product Index

P1703, P1704, P3704, P3703

End Cap Anchors

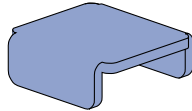


Part Number	Channel	"A" In (mm)	Wt/100 pcs Lbs (kg)
P1703	P1000	2 ¹³ / ₃₂ 61.1	30 13.6
P1704	P1000	3 ¹⁷ / ₃₂ 89.7	37 16.8
P3703	P3300	2 ⁷ / ₁₆ 61.9	17 7.7
P3704	P3000	3 76.2	20 9.1
P4703	P4000	2 ³ / ₈ 60.3	27 12.2

Note: End cap anchor for use with 1⁵/₈" wide standard Unistrut inserts only.

P2407, P3280, P3380

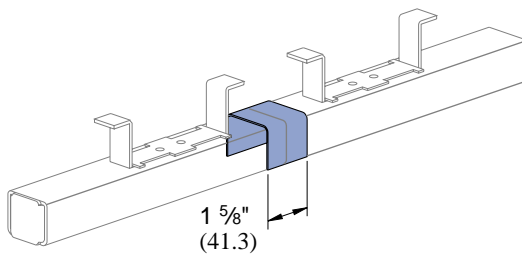
End Caps



Part Number	Fits Channel	Wt/100 pcs Lbs (kg)
P2407	P1000	10 4.5
P3280	P3000	8 3.6
P3380	P3300	5 2.3

P3663, P4663

Joint Covers



Part Number	Use With Insert Series	Wt/100 pcs Lbs (kg)
P3663	P3270	10 4.5
P4663	P3370	6 2.7

NOTE: Joint cover for use with 1⁵/₈" wide standard Unistrut inserts only.



Load Chart by Length

Part Number	Insert Length In (mm)	Wt/100 ft Lbs (kg)	Anchor Spacing In (mm)	Max. Allowable Point Load Lbs (kg)	Min. Spacing Between Pt. Loads In (mm)	Max. Allowable Uniform Load Lbs (kg)
P3249	3 76.2	85 38.6	3 76.2	500 226.8	-	500 226.8
P3349		68 30.8	3 76.2	400 181.4	-	400 181.4
P3250	4 101.6	100 45.4	4 101.6	800 362.9	-	800 362.9
P3350		81 36.7	4 101.6	500 226.8	-	500 226.8
P3251	6 152.4	130 59.0	6 152.4	1,000 453.6	-	1,000 453.6
P3351		102 46.3	6 152.4	750 340.2	-	750 340.2
P3252	8 203.2	159 72.1	8 203.2	1,200 544.3	-	1,200 544.3
P3352		122 55.3	8 203.2	1,000 453.6	-	1,000 453.6
P3754	12 304.8	210 95.3	8 203.2	2,500 1,134.0	3 76.2	5,000 2,268.0
P3253		227 103.0	4 101.6	2,000 907.2	-	2,000 907.2
P3353		174 78.9	4 101.6	1,500 680.4	-	1,500 680.4
P3254	16 406.4	270 122.5	4 101.6	2,000 907.2	12 304.8	4,000 1,814.4
P3354		185 83.9	4 101.6	1,500 680.4	12 304.8	3,000 1,360.8
P3255	20 508.0	357 161.9	4 101.6	2,000 907.2	12 304.8	4,000 1,814.4
P3355		231 104.8	4 101.6	1,500 680.4	12 304.8	3,000 1,360.8
P3256	24 609.6	399 181.0	4 101.6	2,000 907.2	12 304.8	4,000 1,814.4
P3356		277 125.6	4 101.6	1,500 680.4	12 304.8	3,000 1,360.8

Continuous Concrete Insert Load Chart

Up to 20 Ft. (6.10m)

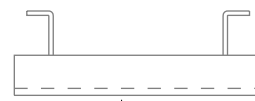
Part Number	Wt/100 ft Lbs (kg)	Anchor Spacing In (mm)	Max. Allowable Point Load Lbs (kg)	Min. Spacing Between Pt. Loads In (mm)	Max. Allowable Uniform Load Lbs/Ft (kg/m)
P3270	194 88.0	4 101.6	2,000 907.2	12 304.8	2,000 2,976.3
P3370	139 63.0	4 101.6	1,500 680.4	12 304.8	1,500 2,232.2
P3170*	165 74.8	8 203.2	1,000 453.6	12 304.8	1,000 1,488.2

*When used in prestressed concrete "T" Beam.
Load data is based on use of 3000 PSI concrete.

Spot Insert Load Chart

Part Number	Wt/100 pcs Lbs (kg)	Anchor Spacing In (mm)	Max. Allowable Point Load Lbs (kg)	Min. Spacing Between Pt. Loads In (mm)	Max. Allowable Uniform Load Lbs/Ft (kg/m)
M26/M2812	54 24.5	-	1,500 680.4	-	1,500 680.4
M3245	52 23.6	-	1,000 453.6	-	1,000 453.6
M24/M2512	52 23.6	-	800 362.9	-	800 362.9

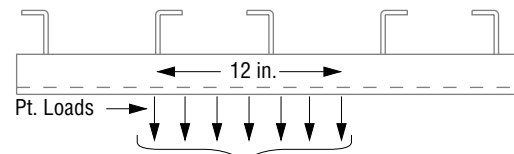
Maximum Allowable Point Load



Max. Allowable Point Load

The maximum allowable point load may be placed anywhere along the insert.
All loads placed less than 2" from the end of an insert must be reduced by 50%.

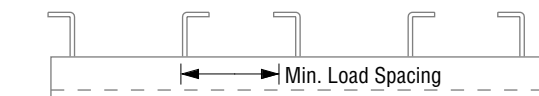
Maximum Allowable Uniform Load



Max. Allowable Uniform Load

The maximum allowable uniform load must be placed as a series of point loads.

Spacing of Multiple Point Loads

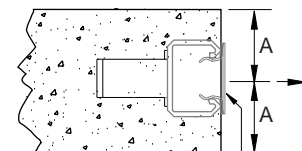
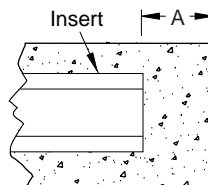


Max. Allowable Pt. Loads
Min. Load Spacing
Max. Allowable Uniform Load

Pull-Out Load

Minimum Edge Distance to Achieve Rated Pull-Out Capacity

A = 1 7/8" (48mm); P3170
3" (76mm); all others



P3712P

Note

When used for mechanical supports, load capacities of brackets and fittings should be in compliance with the American Standard Code for Pressure Piping.

15/8" Channel
 Telesruct System
 Nuts & Hardware
 General Fittings
 Pipe/Conduit Supports
 Electrical Fittings
 Concrete Inserts
 1 1/4" Framing System
 1 3/16" Framing System
 Fiberglass System
 Special Metals
 PrimeAngle System
 Product Index