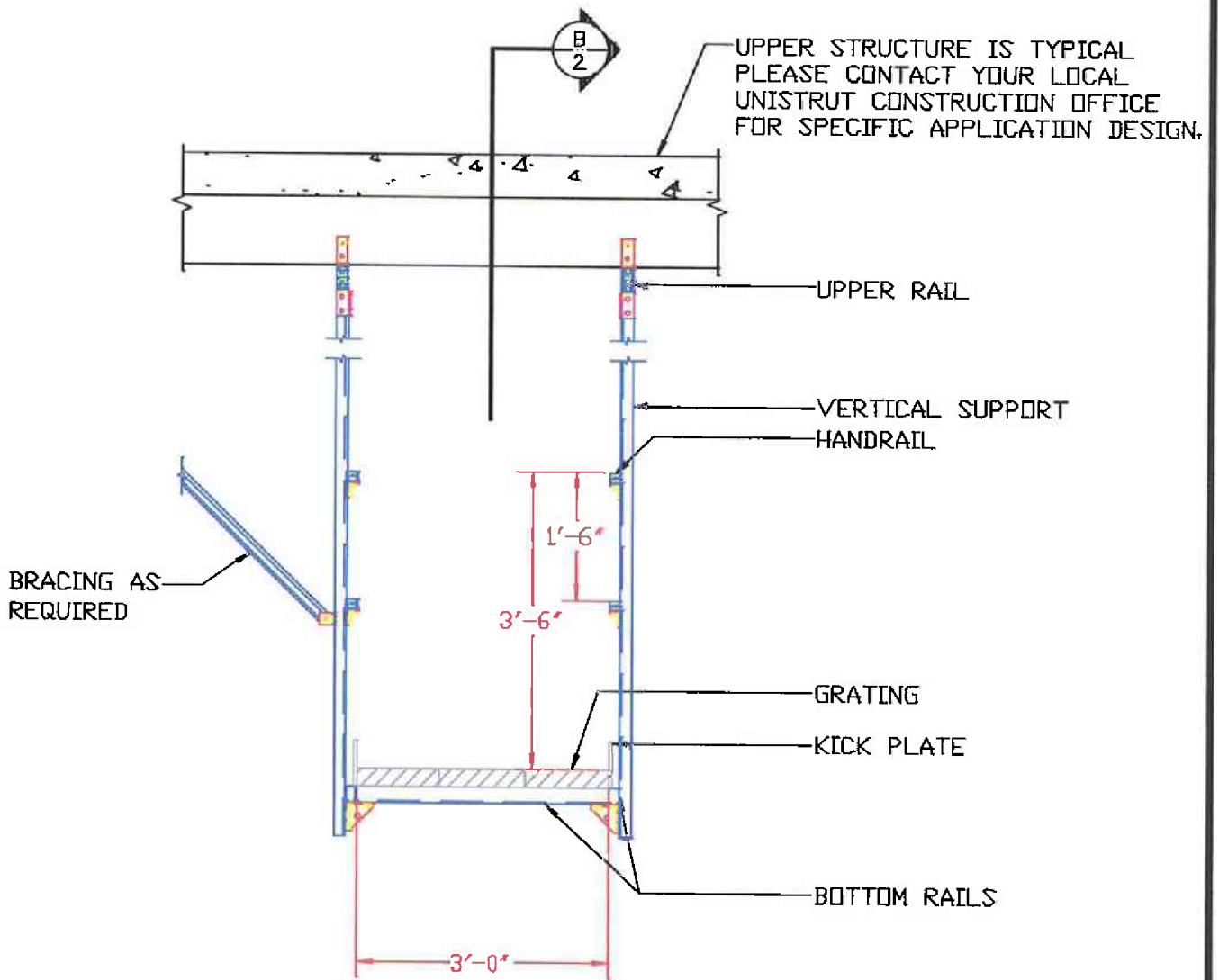


GENERAL NOTES

1. THIS UNISTRUT CATWALK SYSTEM IS DESIGNED TO SUPPORT A MAXIMUM UNIFORM LOAD OF ___ PSF. *
2. AREA DIRECTLY ABOVE THE VERTICAL SUPPORT TO BE FREE AND CLEAR OF ALL OBSTRUCTIONS.
3. EXISTING STRUCTURE TO BE CHECKED BY OTHERS.
4. ALL CHANNEL & FITTINGS TO HAVE STANDARD UNISTRUT "PERMA-GREEN" FINISH AND ALL HARDWARE TO BE ELECTRO-GALVANIZED.

* DESIGN LOAD VARIES BASED ON MAXIMUM SPANS - PLEASE CONTACT YOUR LOCAL UNISTRUT OFFICE FOR SPECIFIC LOADING DESIGN.



SECTION: UNISTRUT CATWALK
 SCALE: 1/2" = 1'-0"



UNISTRUT

800-586-4787

800-465-8039 Fax

UNISTRUT CATWALK SYSTEM

BY SB

DATE 12/08/03

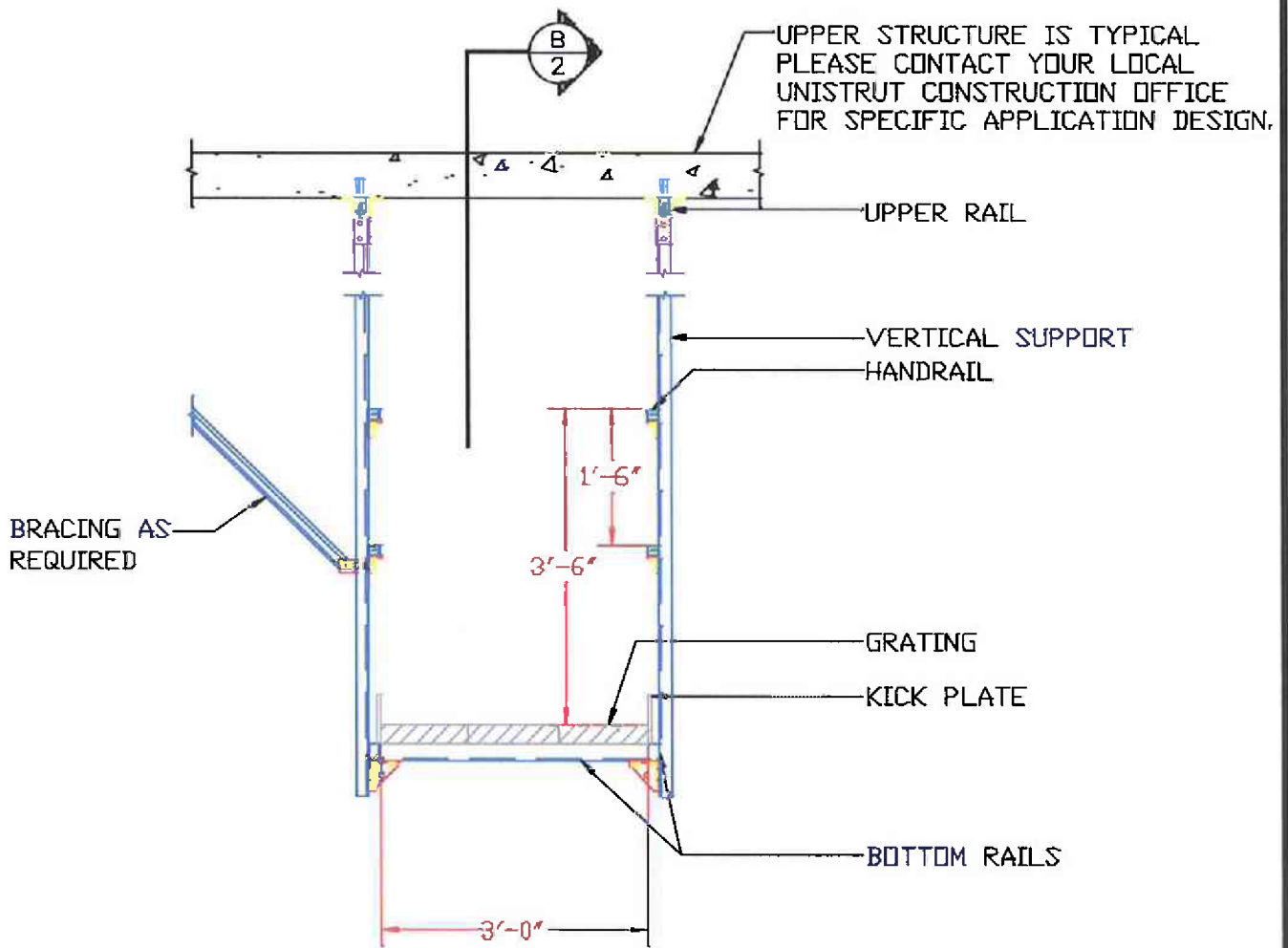
CW-A-CB

SHEET
1 OF 2

GENERAL NOTES

1. THIS UNISTRUT CATWALK SYSTEM IS DESIGNED TO SUPPORT A MAXIMUM UNIFORM LOAD OF ___ PSF. *
2. AREA DIRECTLY ABOVE THE VERTICAL SUPPORT TO BE FREE AND CLEAR OF ALL OBSTRUCTIONS.
3. EXISTING STRUCTURE TO BE CHECKED BY OTHERS.
4. ALL CHANNEL & FITTINGS TO HAVE STANDARD UNISTRUT "PERMA-GREEN" FINISH AND ALL HARDWARE TO BE ELECTRO-GALVANIZED.

* DESIGN LOAD VARIES BASED ON MAXIMUM SPANS - PLEASE CONTACT YOUR LOCAL UNISTRUT OFFICE FOR SPECIFIC LOADING DESIGN.



SECTION: UNISTRUT CATWALK
SCALE: 1/2" = 1'-0"



UNISTRUT
800-586-4787
800-465-8039 Fax

UNISTRUT CATWALK SYSTEM

BY SB

DATE 12/08/03

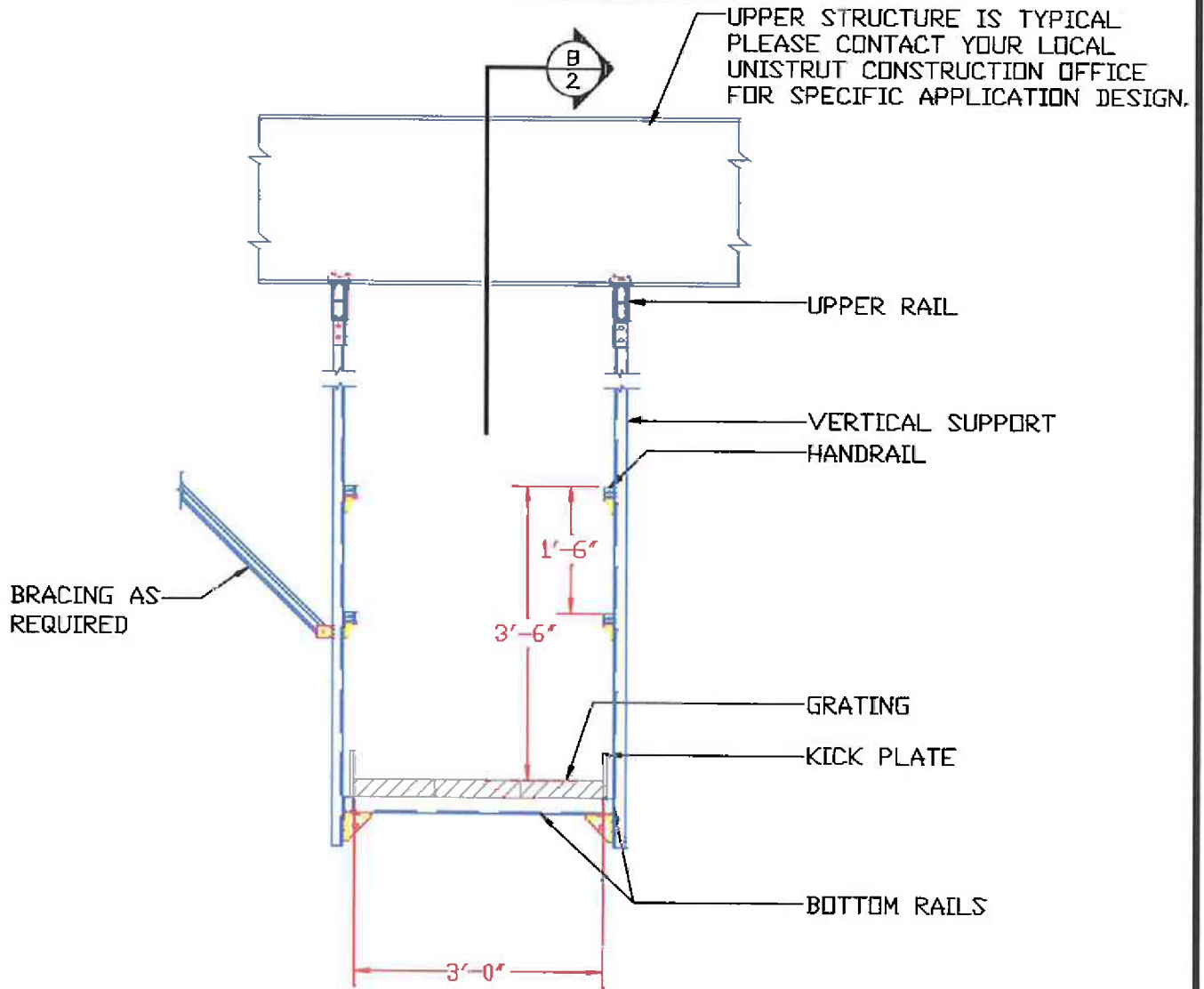
CW-A-CS

SHEET
1 OF 2

GENERAL NOTES

1. THIS UNISTRUT CATWALK SYSTEM IS DESIGNED TO SUPPORT A MAXIMUM UNIFORM LOAD OF ___ PSF. *
2. AREA DIRECTLY ABOVE THE VERTICAL SUPPORT TO BE FREE AND CLEAR OF ALL OBSTRUCTIONS.
3. EXISTING STRUCTURE TO BE CHECKED BY OTHERS.
4. ALL CHANNEL & FITTINGS TO HAVE STANDARD UNISTRUT "PERMA-GREEN" FINISH AND ALL HARDWARE TO BE ELECTRO-GALVANIZED.

* DESIGN LOAD VARIES BASED ON MAXIMUM SPANS - PLEASE CONTACT YOUR LOCAL UNISTRUT OFFICE FOR SPECIFIC LOADING DESIGN.



A
1 SECTION: UNISTRUT CATWALK
SCALE: 1/2" = 1'-0"



UNISTRUT
800-586-4787
800-465-8039 Fax

UNISTRUT CATWALK SYSTEM

BY SB

DATE 12/08/03

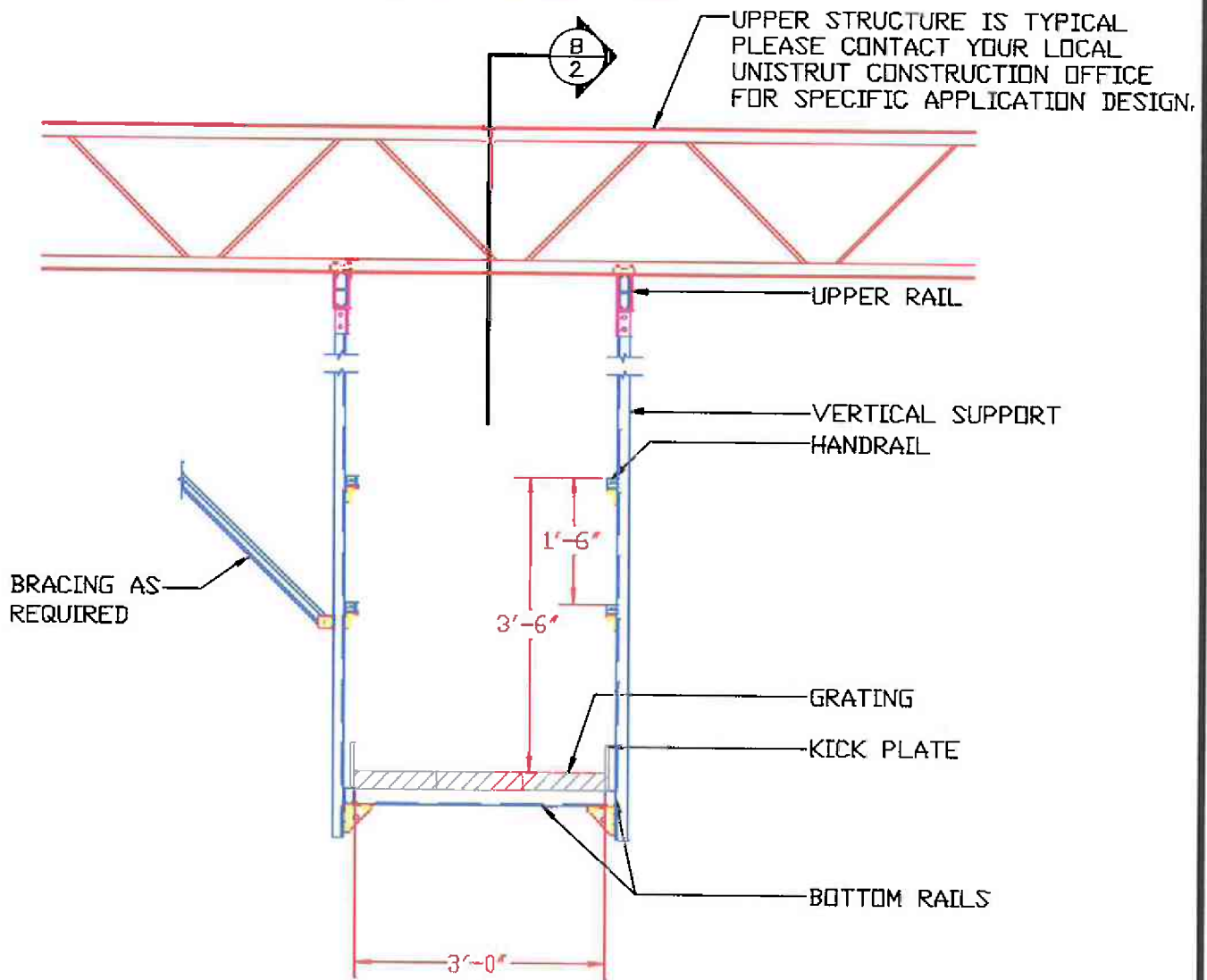
CW-A-SB

SHEET
1 OF 2

GENERAL NOTES

1. THIS UNISTRUT CATWALK SYSTEM IS DESIGNED TO SUPPORT A MAXIMUM UNIFORM LOAD OF ___ PSF. *
2. AREA DIRECTLY ABOVE THE VERTICAL SUPPORT TO BE FREE AND CLEAR OF ALL OBSTRUCTIONS.
3. EXISTING STRUCTURE TO BE CHECKED BY OTHERS.
4. ALL CHANNEL & FITTINGS TO HAVE STANDARD UNISTRUT "PERMA-GREEN" FINISH AND ALL HARDWARE TO BE ELECTRO-GALVANIZED.

* DESIGN LOAD VARIES BASED ON MAXIMUM SPANS - PLEASE CONTACT YOUR LOCAL UNISTRUT OFFICE FOR SPECIFIC LOADING DESIGN.



SECTION: UNISTRUT CATWALK
 SCALE: 1/2" = 1'-0"



UNISTRUT
 800-586-4787
 800-465-8039 Fax

UNISTRUT CATWALK SYSTEM

BY SB

DATE 12/08/03

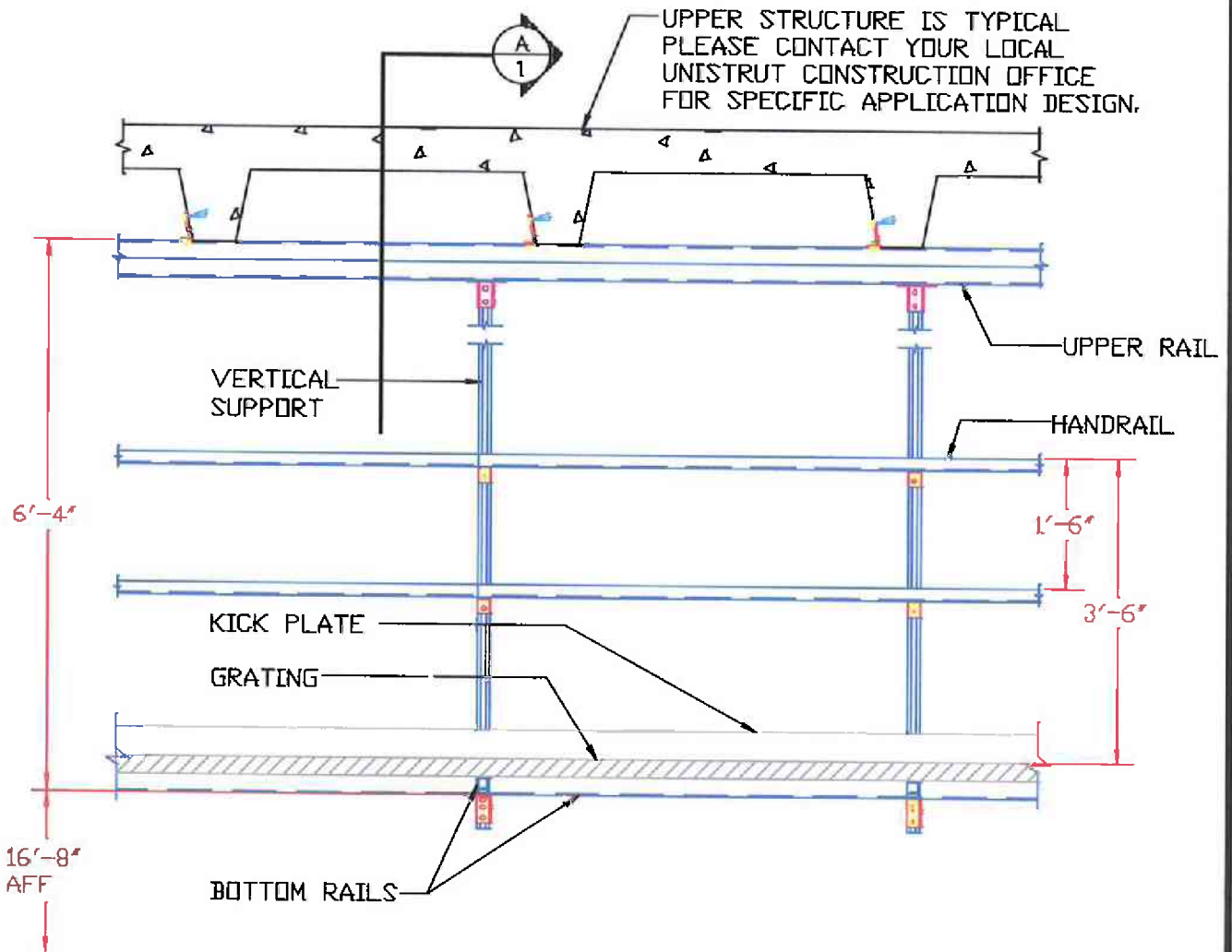
CW-A-SJ

SHEET
 1 OF 2

GENERAL NOTES

1. THIS UNISTRUT CATWALK SYSTEM IS DESIGNED TO SUPPORT A MAXIMUM UNIFORM LOAD OF ___ PSF. *
2. AREA DIRECTLY ABOVE THE VERTICAL SUPPORT TO BE FREE AND CLEAR OF ALL OBSTRUCTIONS.
3. EXISTING STRUCTURE TO BE CHECKED BY OTHERS.
4. ALL CHANNEL & FITTINGS TO HAVE STANDARD UNISTRUT "PERMA-GREEN" FINISH AND ALL HARDWARE TO BE ELECTRO-GALVANIZED.

* DESIGN LOAD VARIES BASED ON MAXIMUM SPANS - PLEASE CONTACT YOUR LOCAL UNISTRUT OFFICE FOR SPECIFIC LOADING DESIGN.



SECTION: UNISTRUT CATWALK
 SCALE: 1/2" = 1'-0"



UNISTRUT

800-586-4787

800-465-8039 Fax

UNISTRUT CATWALK SYSTEM

BY SB

DATE 12/08/03

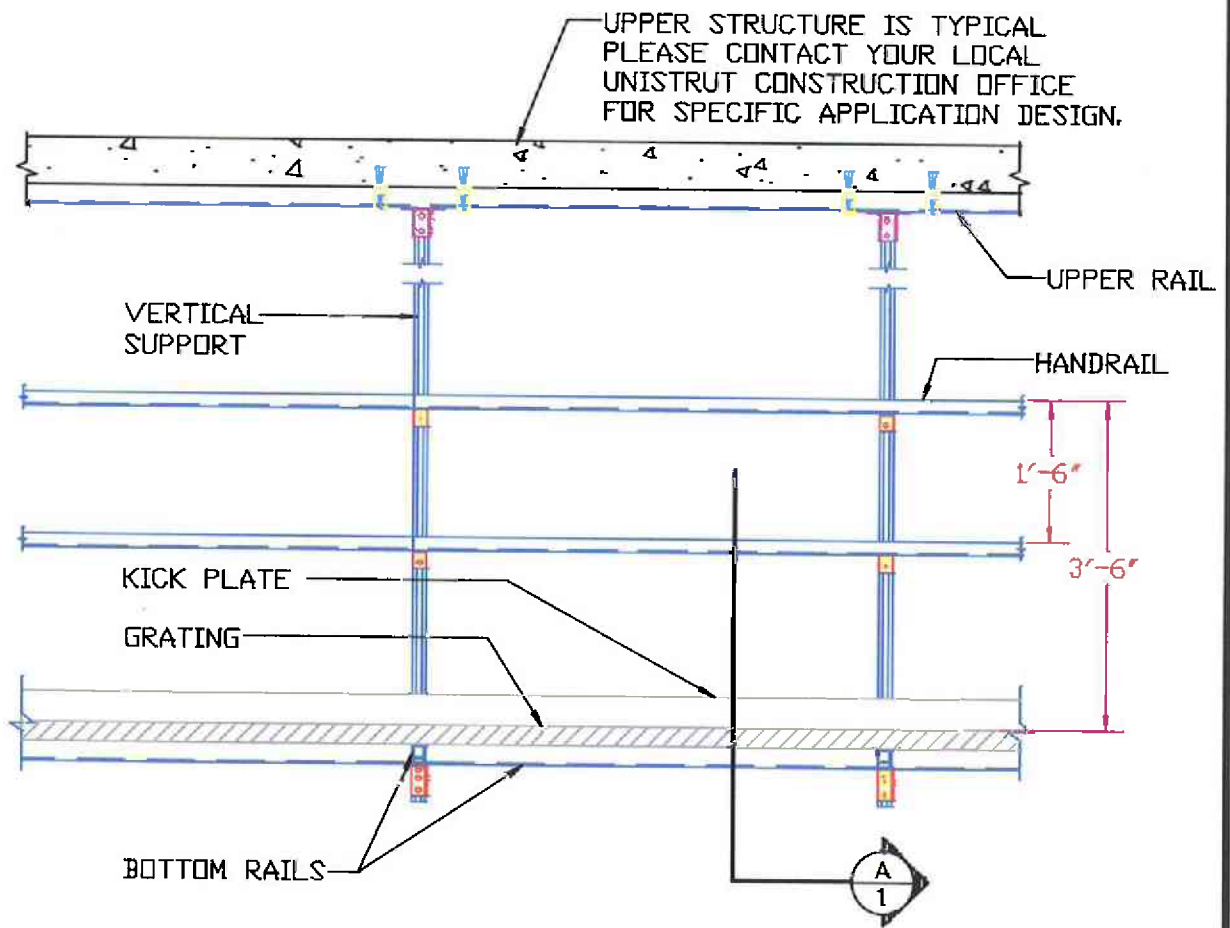
CW-B-CB

SHEET
2 OF 2

GENERAL NOTES

1. THIS UNISTRUT CATWALK SYSTEM IS DESIGNED TO SUPPORT A MAXIMUM UNIFORM LOAD OF ___ PSF. *
2. AREA DIRECTLY ABOVE THE VERTICAL SUPPORT TO BE FREE AND CLEAR OF ALL OBSTRUCTIONS.
3. EXISTING STRUCTURE TO BE CHECKED BY OTHERS.
4. ALL CHANNEL & FITTINGS TO HAVE STANDARD UNISTRUT "PERMA-GREEN" FINISH AND ALL HARDWARE TO BE ELECTRO-GALVANIZED.

* DESIGN LOAD VARIES BASED ON MAXIMUM SPANS - PLEASE CONTACT YOUR LOCAL UNISTRUT OFFICE FOR SPECIFIC LOADING DESIGN.



SECTION: UNISTRUT CATWALK
 SCALE: 1/2" = 1'-0"



UNISTRUT
 800-586-4787
 800-465-8039 Fax

UNISTRUT CATWALK SYSTEM

BY SB

DATE 12/08/03

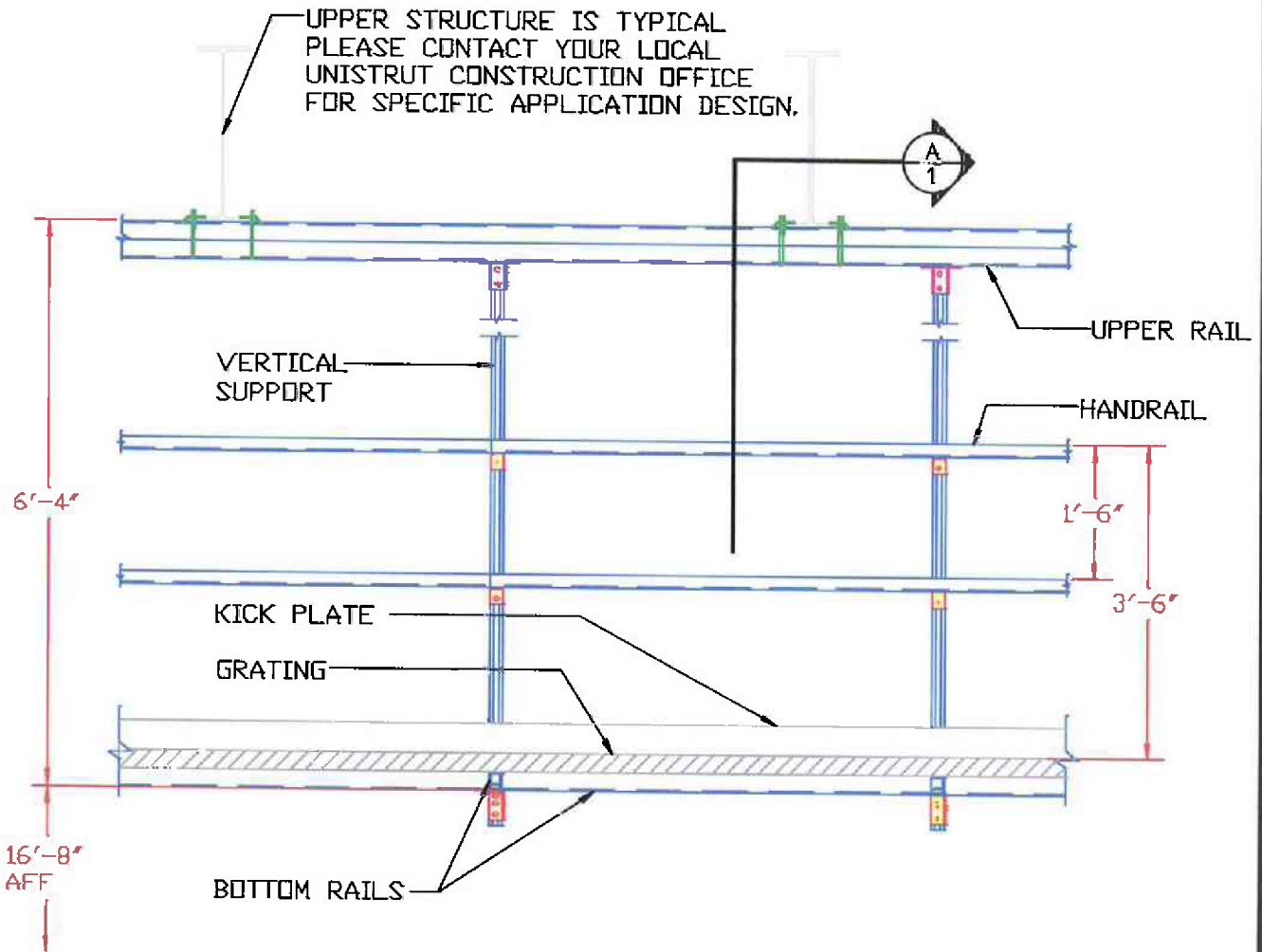
CW-B-CS

SHEET
 2 OF 2

GENERAL NOTES

1. THIS UNISTRUT CATWALK SYSTEM IS DESIGNED TO SUPPORT A MAXIMUM UNIFORM LOAD OF ___ PSF. *
2. AREA DIRECTLY ABOVE THE VERTICAL SUPPORT TO BE FREE AND CLEAR OF ALL OBSTRUCTIONS.
3. EXISTING STRUCTURE TO BE CHECKED BY OTHERS.
4. ALL CHANNEL & FITTINGS TO HAVE STANDARD UNISTRUT "PERMA-GREEN" FINISH AND ALL HARDWARE TO BE ELECTRO-GALVANIZED.

* DESIGN LOAD VARIES BASED ON MAXIMUM SPANS - PLEASE CONTACT YOUR LOCAL UNISTRUT OFFICE FOR SPECIFIC LOADING DESIGN.



SECTION: UNISTRUT CATWALK
 SCALE: 1/2" = 1'-0"



UNISTRUT

800-586-4787

800-465-8039 Fax

UNISTRUT CATWALK SYSTEM

BY SB

DATE 12/08/03

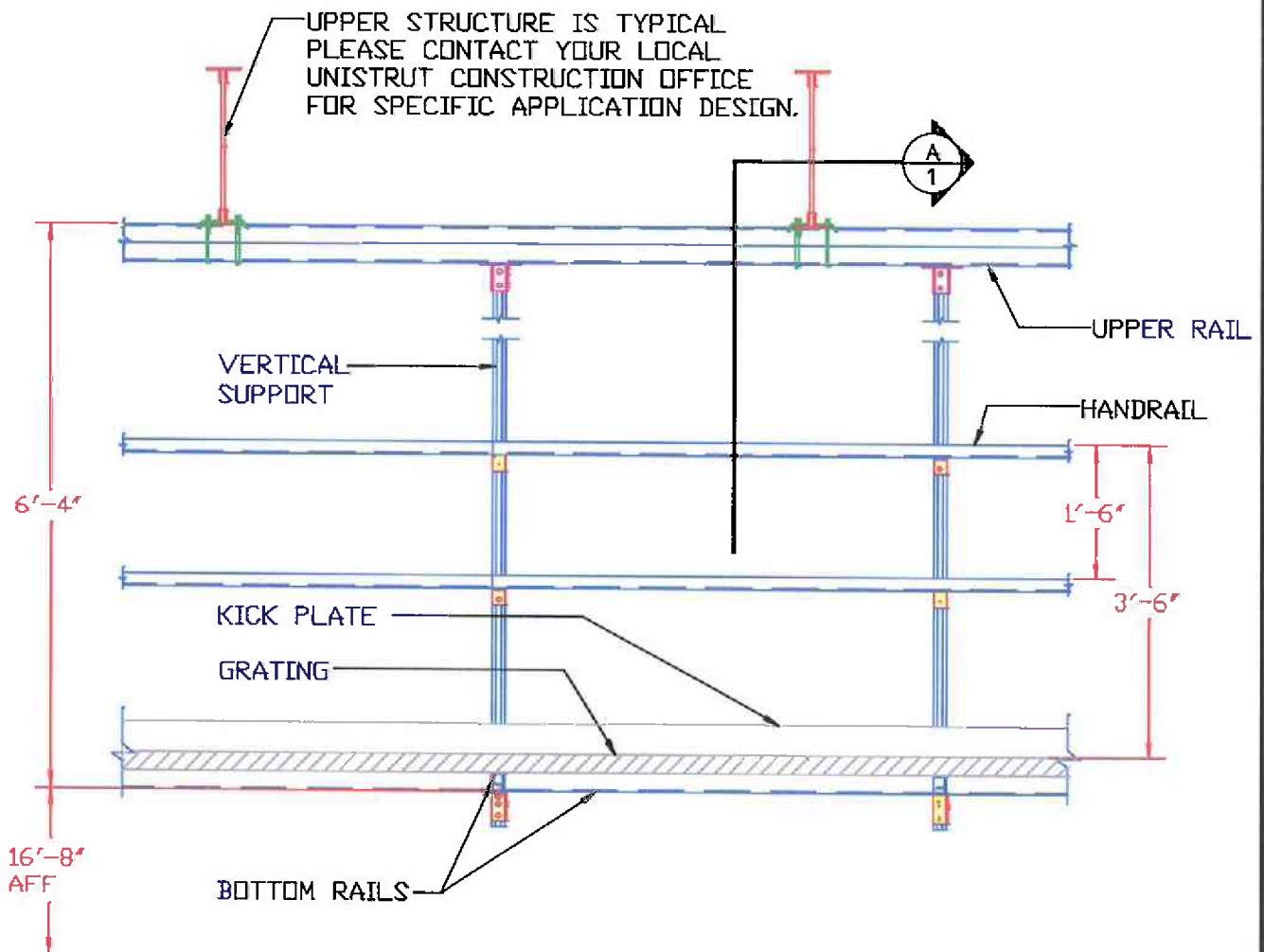
CW-B-SB

SHEET
2 OF 2

GENERAL NOTES

1. THIS UNISTRUT CATWALK SYSTEM IS DESIGNED TO SUPPORT A MAXIMUM UNIFORM LOAD OF ___ PSF.*
2. AREA DIRECTLY ABOVE THE VERTICAL SUPPORT TO BE FREE AND CLEAR OF ALL OBSTRUCTIONS.
3. EXISTING STRUCTURE TO BE CHECKED BY OTHERS.
4. ALL CHANNEL & FITTINGS TO HAVE STANDARD UNISTRUT "PERMA-GREEN" FINISH AND ALL HARDWARE TO BE ELECTRO-GALVANIZED.

* DESIGN LOAD VARIES BASED ON MAXIMUM SPANS - PLEASE CONTACT YOUR LOCAL UNISTRUT OFFICE FOR SPECIFIC LOADING DESIGN.



SECTION: UNISTRUT CATWALK
SCALE: 1/2" = 1'-0"



UNISTRUT

800-586-4787

800-465-8039 Fax

UNISTRUT CATWALK SYSTEM

BY SB

DATE 12/08/03

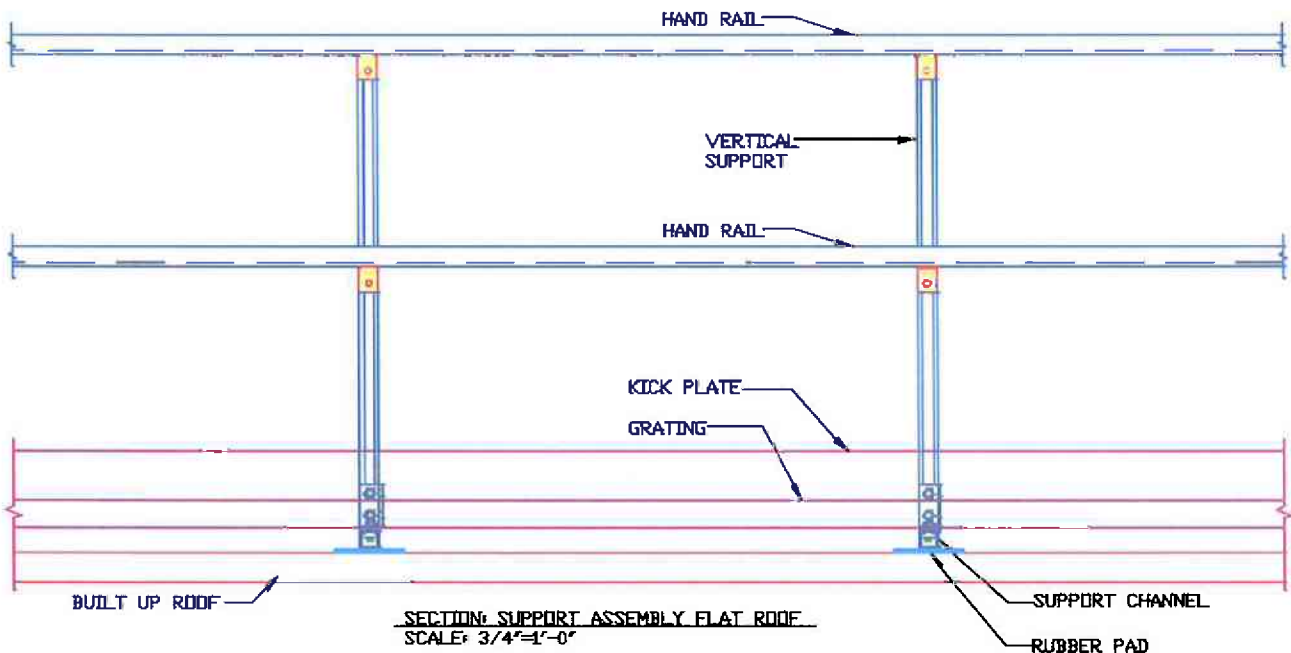
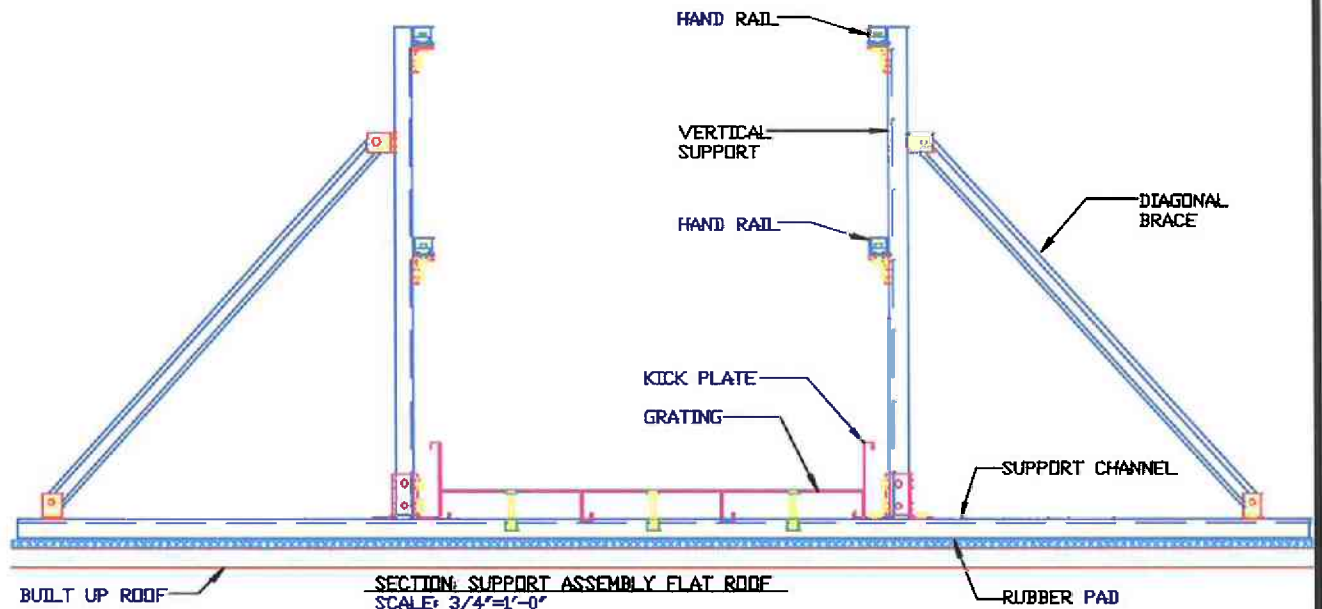
CW-B-SJ

SHEET
2 OF 2

GENERAL NOTES

1. THIS UNISTRUT ROOF WALK SYSTEM IS DESIGNED TO SUPPORT A MAXIMUM UNIFORM LOAD OF ___ PSF. *
2. EXISTING STRUCTURE TO BE CHECKED BY OTHERS.
3. ALL CHANNEL & FITTINGS TO HAVE STANDARD UNISTRUT "PERMA-GREEN" FINISH AND ALL HARDWARE TO BE ELECTRO-GALVANIZED.

* DESIGN LOAD VARIES BASED ON MAXIMUM SPANS - PLEASE CONTACT YOUR LOCAL UNISTRUT OFFICE FOR SPECIFIC LOADING DESIGN.



UNISTRUT
800-586-4787
800-465-8039 Fax

UNISTRUT ROOF WALK SYSTEM

BY SB

DATE 12/08/03

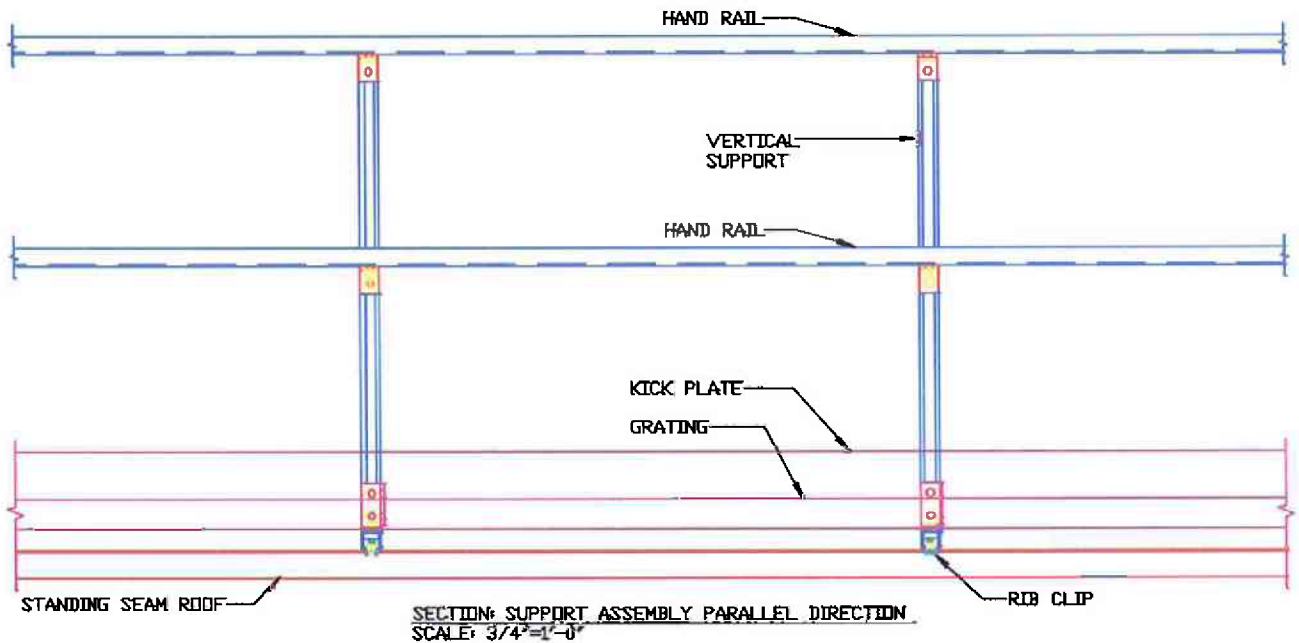
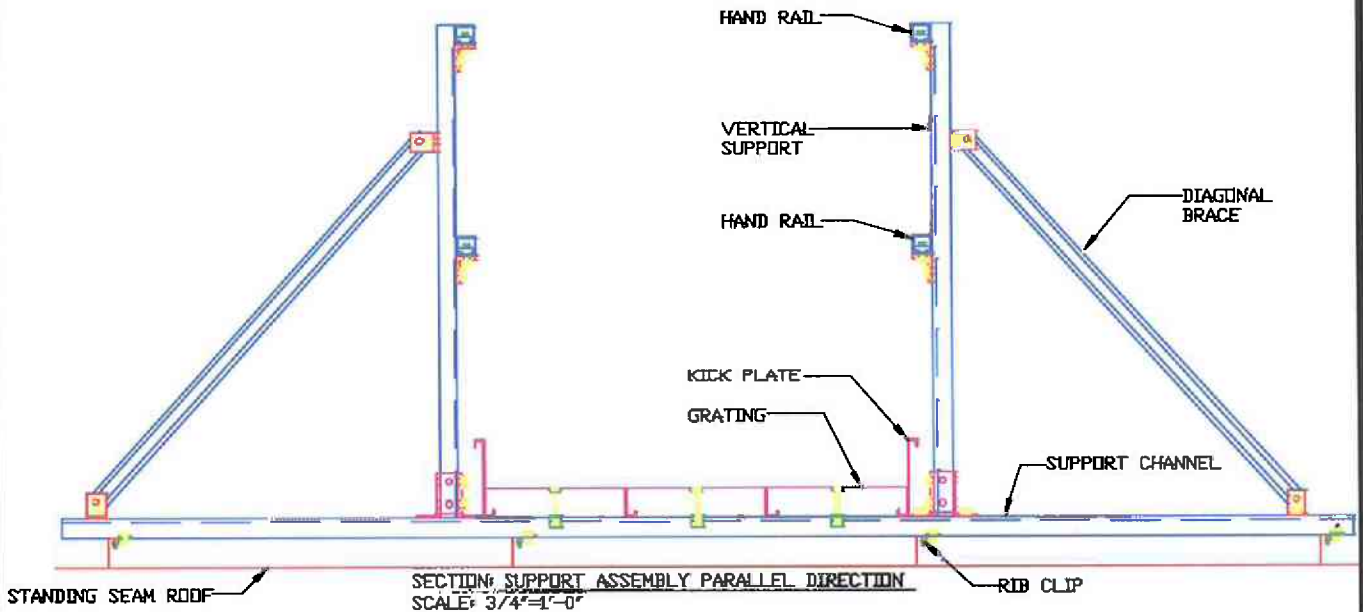
RW-FR

SHEET
1 OF 1

GENERAL NOTES

1. THIS UNISTRUT ROOF WALK SYSTEM IS DESIGNED TO SUPPORT A MAXIMUM UNIFORM LOAD OF ___ PSF. *
2. EXISTING STRUCTURE TO BE CHECKED BY OTHERS.
3. ALL CHANNEL & FITTINGS TO HAVE STANDARD UNISTRUT "PERMA-GREEN" FINISH AND ALL HARDWARE TO BE ELECTRO-GALVANIZED.

* DESIGN LOAD VARIES BASED ON MAXIMUM SPANS - PLEASE CONTACT YOUR LOCAL UNISTRUT OFFICE FOR SPECIFIC LOADING DESIGN.



UNISTRUT
800-586-4787
800-465-8039 Fax

UNISTRUT ROOF WALK SYSTEM

BY SB

DATE 12/08/03

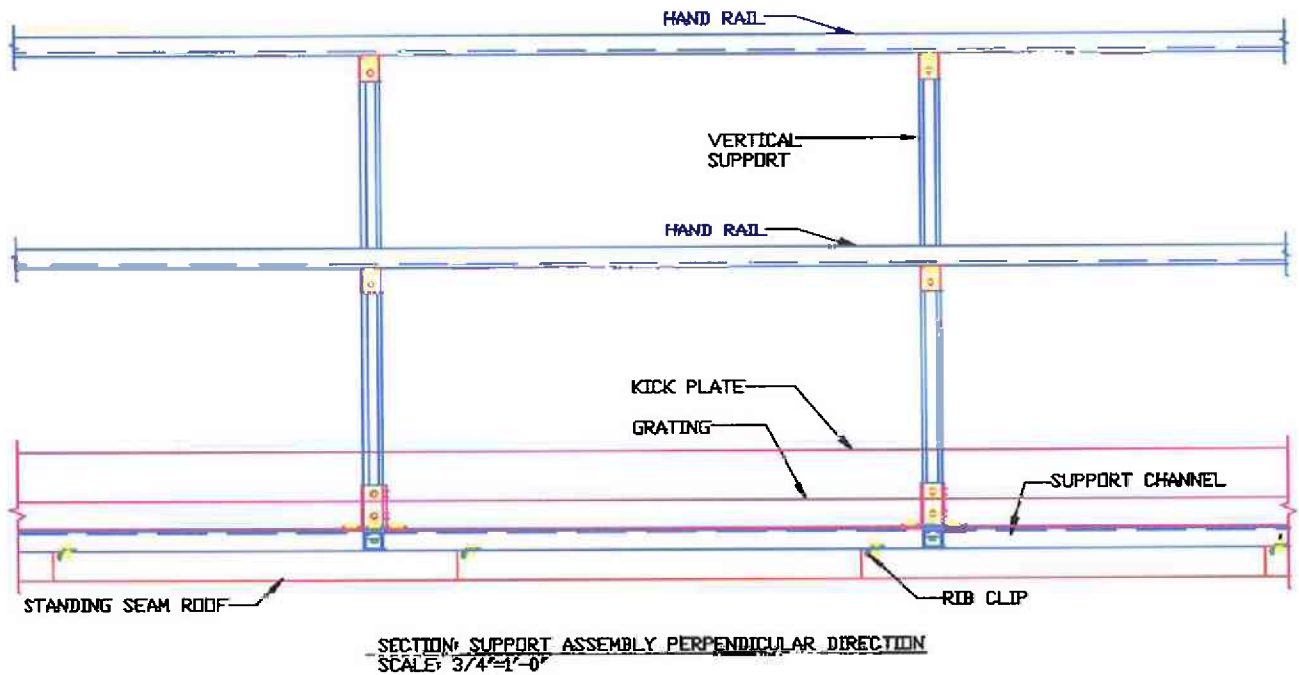
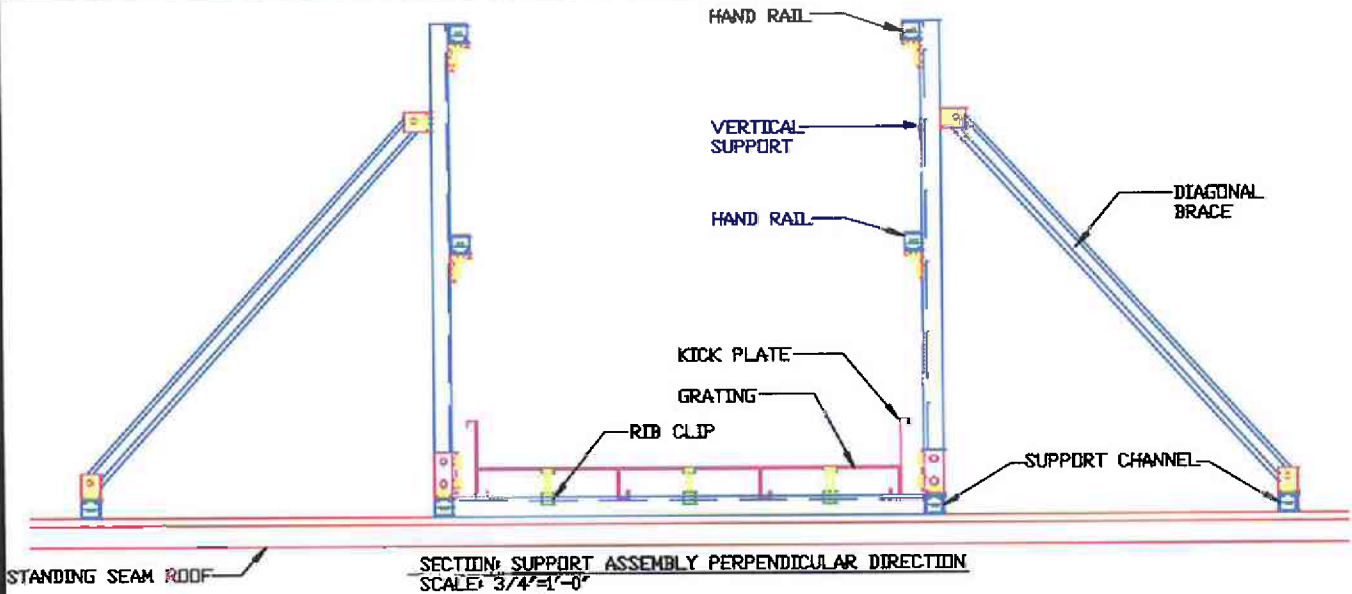
RW-SS-PARA

SHEET
1 OF 1

GENERAL NOTES

1. THIS UNISTRUT ROOF WALK SYSTEM IS DESIGNED TO SUPPORT A MAXIMUM UNIFORM LOAD OF ___ PSF. *
2. EXISTING STRUCTURE TO BE CHECKED BY OTHERS.
3. ALL CHANNEL & FITTINGS TO HAVE STANDARD UNISTRUT "PERMA-GREEN" FINISH AND ALL HARDWARE TO BE ELECTRO-GALVANIZED.

* DESIGN LOAD VARIES BASED ON MAXIMUM SPANS - PLEASE CONTACT YOUR LOCAL UNISTRUT OFFICE FOR SPECIFIC LOADING DESIGN.



UNISTRUT
800-586-4787
800-465-8039 Fax

UNISTRUT ROOF WALK SYSTEM

BY SB

DATE 12/08/03

RW-SS-PERP

SHEET
1 OF 1