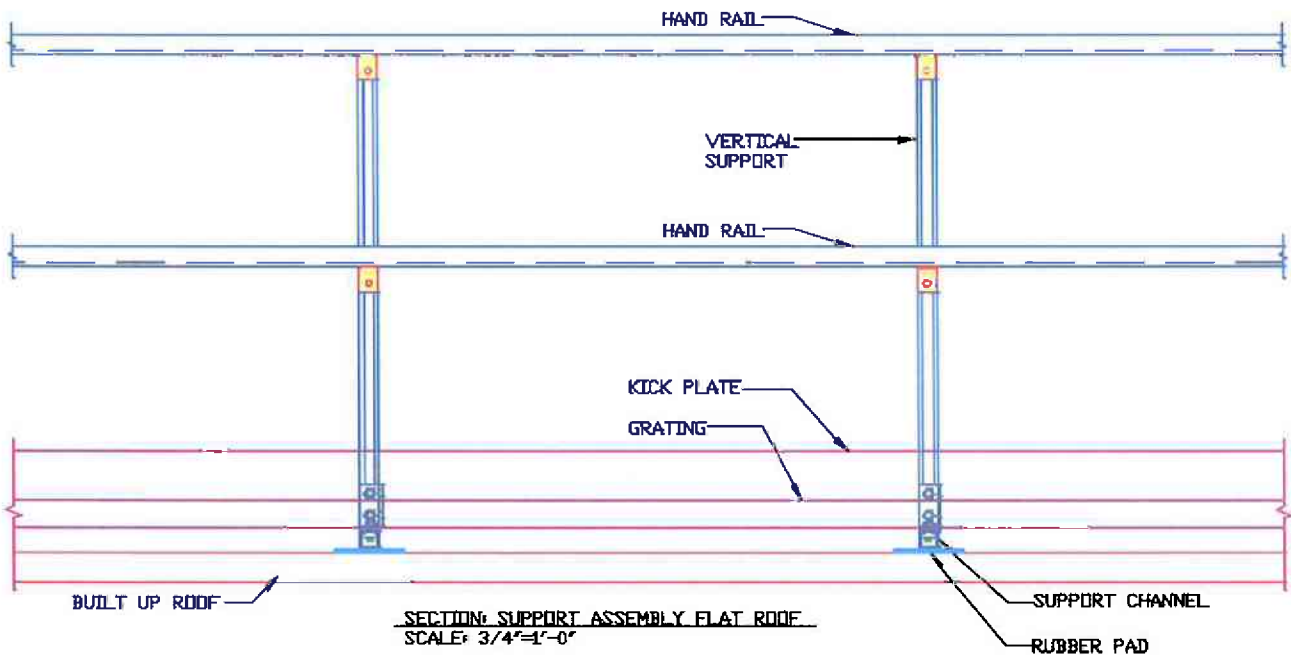
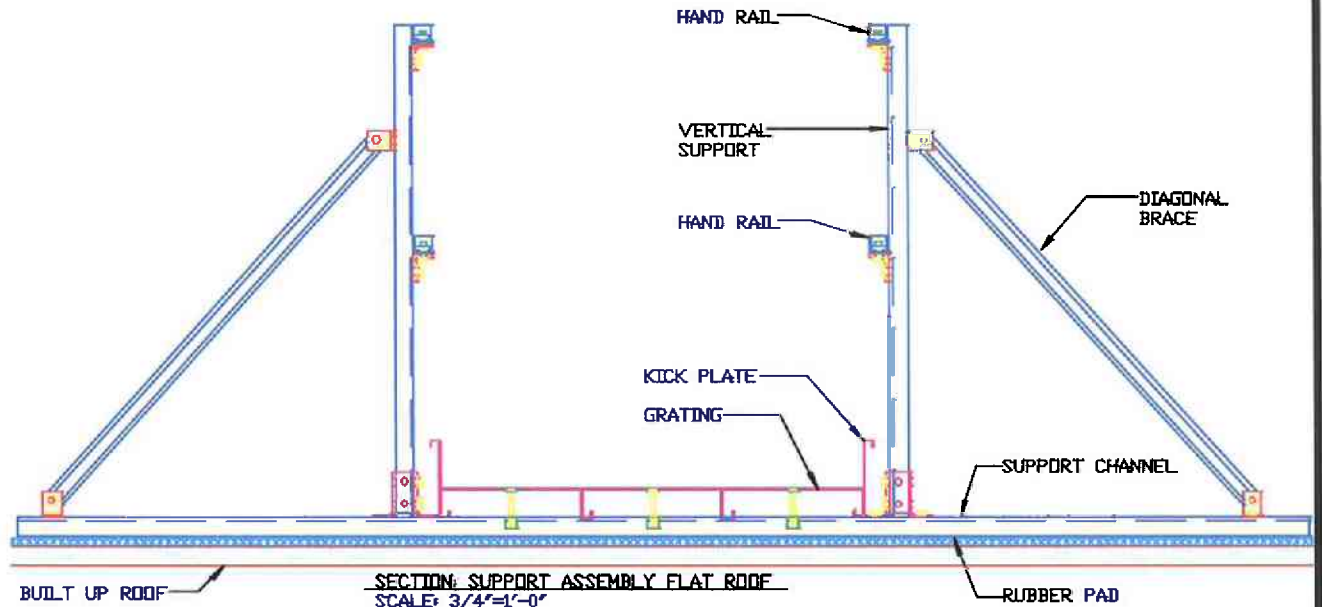


GENERAL NOTES

1. THIS UNISTRUT ROOF WALK SYSTEM IS DESIGNED TO SUPPORT A MAXIMUM UNIFORM LOAD OF ___ PSF. *
2. EXISTING STRUCTURE TO BE CHECKED BY OTHERS.
3. ALL CHANNEL & FITTINGS TO HAVE STANDARD UNISTRUT "PERMA-GREEN" FINISH AND ALL HARDWARE TO BE ELECTRO-GALVANIZED.

* DESIGN LOAD VARIES BASED ON MAXIMUM SPANS - PLEASE CONTACT YOUR LOCAL UNISTRUT OFFICE FOR SPECIFIC LOADING DESIGN.



UNISTRUT
 800-586-4787
 800-465-8039 Fax

UNISTRUT ROOF WALK SYSTEM

BY SB

DATE 12/08/03

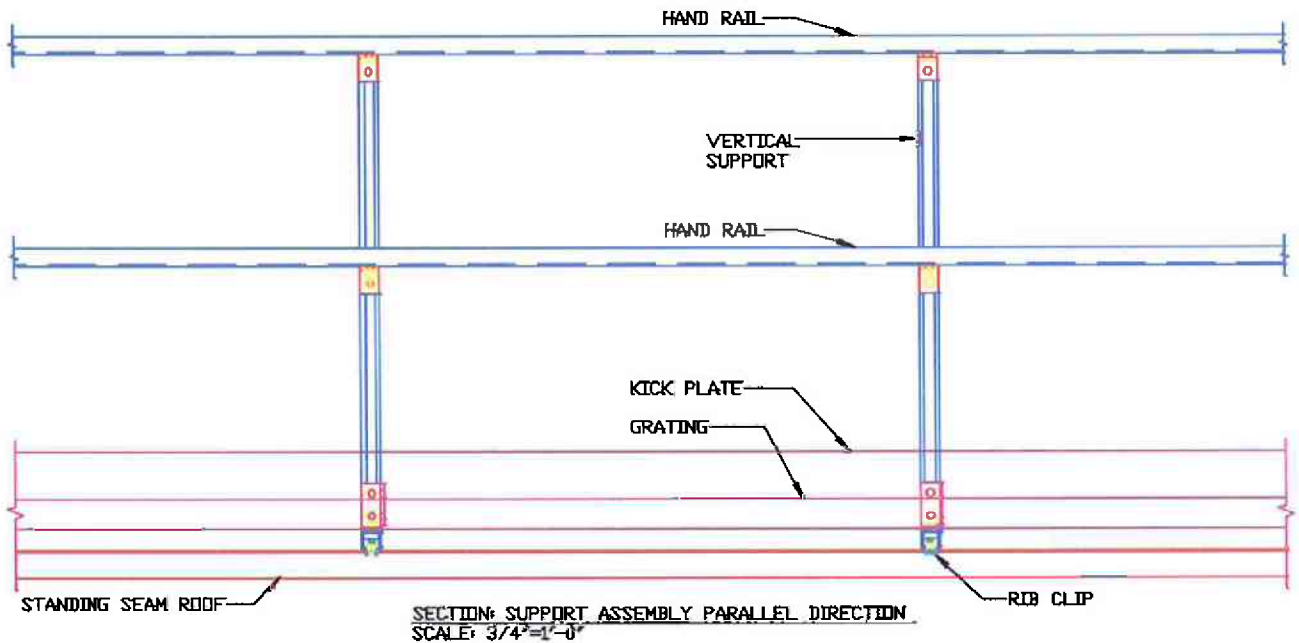
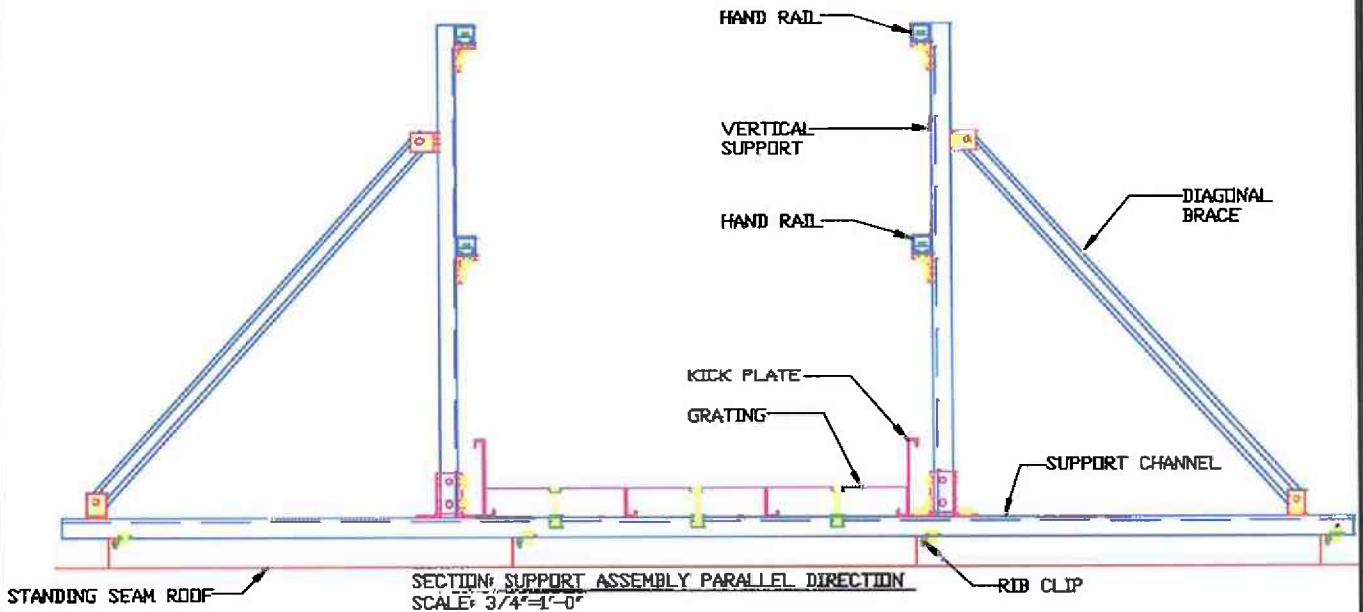
RW-FR

SHEET
 1 OF 1

GENERAL NOTES

1. THIS UNISTRUT ROOF WALK SYSTEM IS DESIGNED TO SUPPORT A MAXIMUM UNIFORM LOAD OF ___ PSF. *
2. EXISTING STRUCTURE TO BE CHECKED BY OTHERS.
3. ALL CHANNEL & FITTINGS TO HAVE STANDARD UNISTRUT "PERMA-GREEN" FINISH AND ALL HARDWARE TO BE ELECTRO-GALVANIZED.

* DESIGN LOAD VARIES BASED ON MAXIMUM SPANS - PLEASE CONTACT YOUR LOCAL UNISTRUT OFFICE FOR SPECIFIC LOADING DESIGN.



UNISTRUT
 800-586-4787
 800-465-8039 Fax

UNISTRUT ROOF WALK SYSTEM

BY SB

DATE 12/08/03

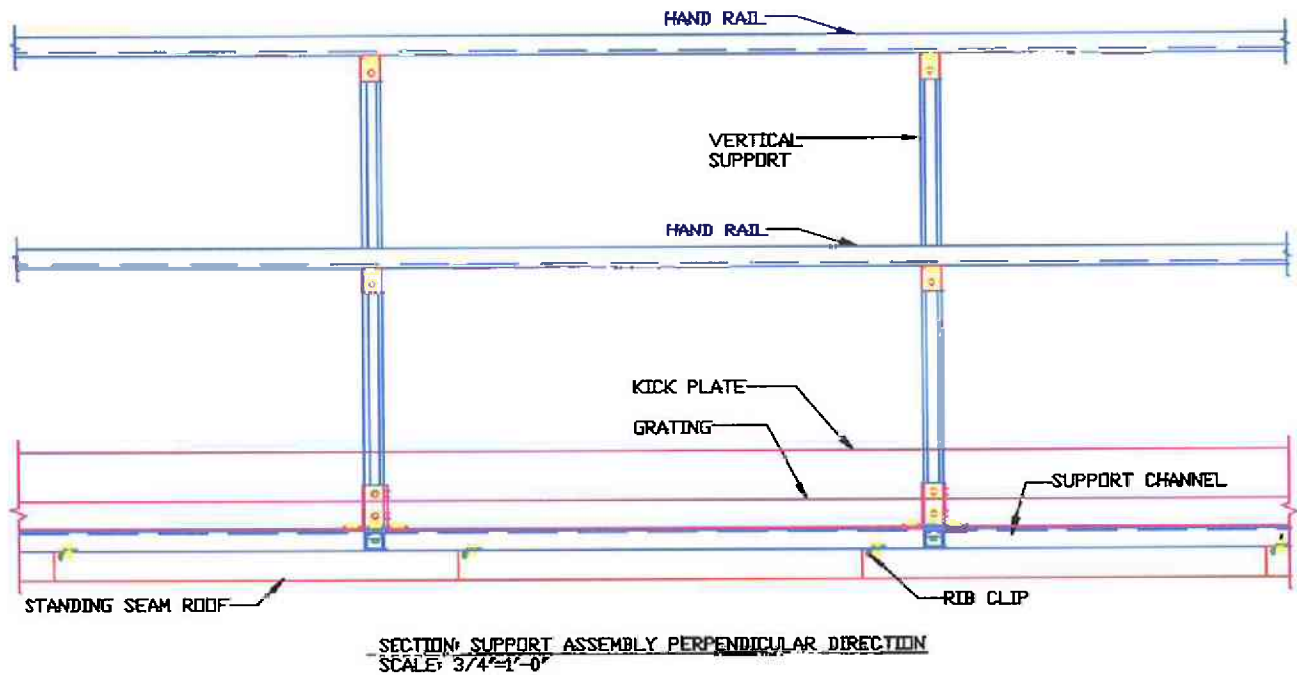
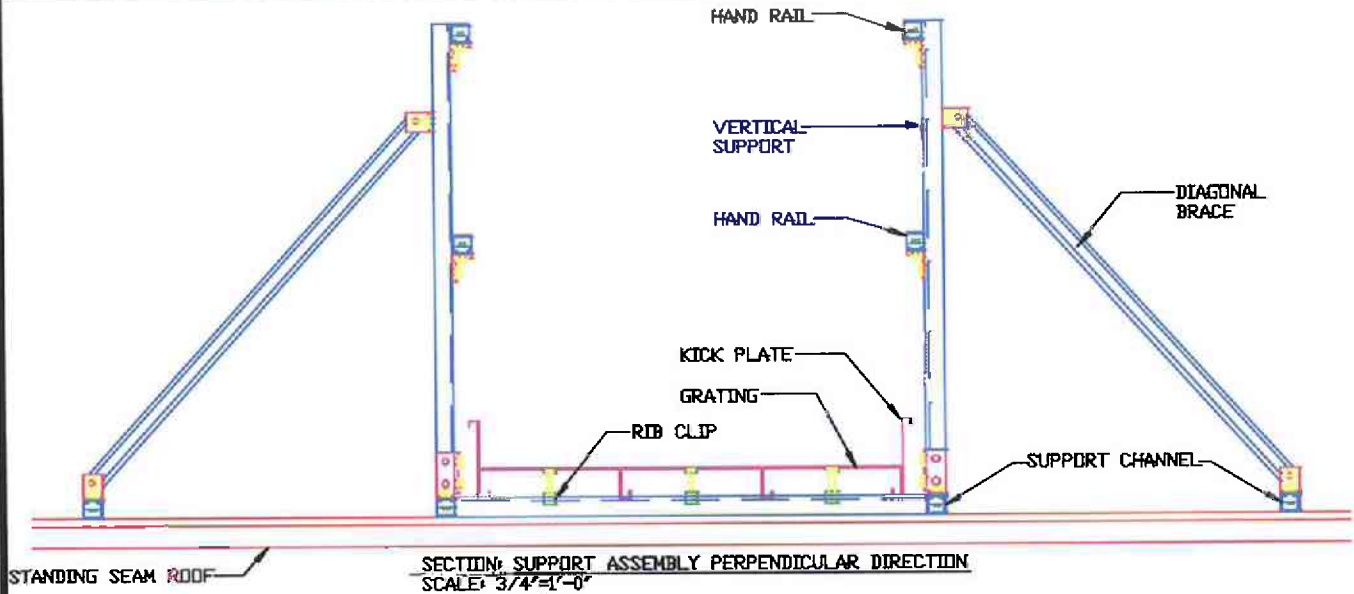
RW-SS-PARA

SHEET
 1 OF 1

GENERAL NOTES

1. THIS UNISTRUT ROOF WALK SYSTEM IS DESIGNED TO SUPPORT A MAXIMUM UNIFORM LOAD OF ___ PSF. *
2. EXISTING STRUCTURE TO BE CHECKED BY OTHERS.
3. ALL CHANNEL & FITTINGS TO HAVE STANDARD UNISTRUT "PERMA-GREEN" FINISH AND ALL HARDWARE TO BE ELECTRO-GALVANIZED.

* DESIGN LOAD VARIES BASED ON MAXIMUM SPANS - PLEASE CONTACT YOUR LOCAL UNISTRUT OFFICE FOR SPECIFIC LOADING DESIGN.



UNISTRUT
800-586-4787
800-465-8039 Fax

UNISTRUT ROOF WALK SYSTEM

BY SB

DATE 12/08/03

RW-SS-PERP

SHEET
1 OF 1